



On-line PICASSO PROJECT

**Comprehensive Catalogue Raisonné
Prof. Dr. Enrique Mallen**

1953



Femme se coiffant. Vallauris. 1-January/1953. Bronze relief with brown patina. 16,2 x 15 cm. Private collection. Also Christie's. #428, 7355, 02/07/07.

OPP.53:173; PP.53:001; WS:464

Tête de faune. Vallauris. 1-January/1953. Clay. 9 x 7,5 x 0,7 cm. Private collection.

OPP.53:462; PP.53:001a; WS:465





Crâne de chèvre sur la table. Paris.
January/1953. Aquatint & grattoir over
reproduction of *Crâne de bélier*. 50,5 x 66 cm.
Musée Picasso, Paris. Dation 1979.

OPP.53:392; MPP:2995

La lecture, fond rouge. Vallauris.
Early/1953. Oil on panel. 81 x 100 cm.
Nationalgalerie, Museum Berggruen,
Staatlichen Museen zu Berlin. Formerly
Mrs. Leon Bagrit Collection, London.

OPP.53:199; PP.53:004; Z.XV:238;
BL.06*:181p; BR.96*:68; MI.53*:181;
RP.60*:191





Femme assise en costume vert. Vallauris. [Early]/1953. Oil on canvas. [92 x 73] 91,7 x 72,9 cm. Sotheby's. #1016, N10680, 05/12/21.

OPP.53:403; PP.53:011; Z.XV:242

Le chandail brodé. Vallauris. 3-January/1953. Lithograph on Arches, edition 50. 46 x 35 cm. Sotheby's. #377, N07835, 11/08/02.

OPP.53:018; B.I:729; M:231





Lettre manuscrite à Max Pellequer. Vallauris. 3-January/1953. Ink on paper. S/U. Piasa. #44, 2142, 02/15/24. Formerly Max Pellequer Collection.

OPP.53:473

Nature morte au livre. Vallauris. 4-January/1953. Lithograph on wove paper, edition 44/50. 42 x 28 cm. Christie's. #180, 8493, 02/14/01.

OPP.53:019; B.I:732; M:234





Tête de femme au chignon. Vallauris. 4-January/1953.
Lithograph, edition 50. [64,8 x 50,8] 65 x 43 cm. Christie's. #224,
1322, 04/28/03.

OPP.53:024; B.I:731; M:233; MPA:1981.6.19; DG.87:33p

Tête de femme de trois-quarts. Vallauris. 4-
January/1953. Lithograph on Arches. [53,7 x 45,1] 54 x
45 cm. Christie's. #223, 1322, 04/28/03.

OPP.53:052; B.I:730; M:232





Femme en fichu. Vallauris. 4-January/1953. Bronze with brown & green patina. 16,5 cm. Private collection. Also Christie's. #473, 7702, 02/05/09.

OPP.53:206; PP.53:001b; WS:466.II

Femme debout. Vallauris. 5-January/1953. Bronze. 51 x 15 x 9 cm. Private collection.

OPP.53:463; PP.53:001c; WS:472





Grand pichet avec deux masques. Vallauris. 6-January/1953. Faience, turned & glazed. 40 x 45 cm. Museum Ludwig, Köln. (Inv ML 01592). Schenkung 2001.

OPP.53:240; WO.92*:143

Oiseau (Colombe). Vallauris. 7-January/1953. White earthenware figure, decoration in engobes. 18 x 11 x 14 cm. Private collection.

OPP.53:376; MR.16*:n/a; PA.20j*:180





Colombe. Vallauris. 9-January/1953. White fired clay, black-rimmed. 27 x 9 cm. Museum Würth, Künzelsau. (Inv 4600).

OPP.53:090; MM.02*:219p; RD.08*:113p;
RP.81:23.7

Tête de femme lisant. Vallauris. [7] 9-January/1953. Oil on panel. 45,8 x 38 cm. Museum Ludwig, Köln. (Inv ML 76/2895). Überweisung Wallraf-Richartz-Museum 1976.

OPP.53:234; PP.53:002; Z.XV:235; GB.14:244p;
JC.59:78p





Colombe. Vallauris. 9-January/1953. Modelled & partially painted white clay. 26 cm. Sotheby's. #121, L19004, 02/27/19.

OPP.53:429

Colombe. Vallauris. 9-January/1953. White terracotta modeled & painted in engobes. 16,5 x 8,5 x 28 cm. Museo Picasso, Málaga. On temporary loan from Fundación Almine & Bernard Ruiz-Picasso para el Arte.

OPP.53:476; DP.20*:186; NC.17*:127



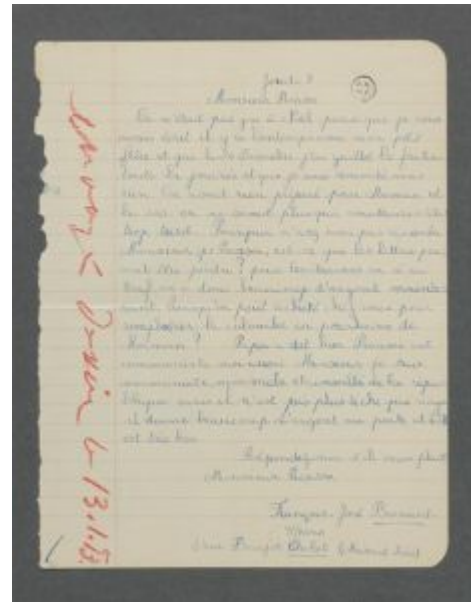


Enveloppe de lettre de François José Bernard âgé de 9,5 ans avec une note manuscrite de Picasso. Vallauris. 10-January/1953. Envelope. S/U. Musée Picasso, Paris. (Inv APCS2002).

OPP.53:345

Lettre de François José Bernard âgé de 9,5 ans avec une note manuscrite de l'artiste. Vallauris. 10-January/1953. Ink on paper. S/U. Musée Picasso, Paris. (Inv APCS2002).

OPP.53:449





Centaure au verre. Vallauris. 13-January/1953. Painted terracotta. 9,5 cm. Hélène Bailly Gallery. Formerly Christie's. #414, 15979, 11/12/18.

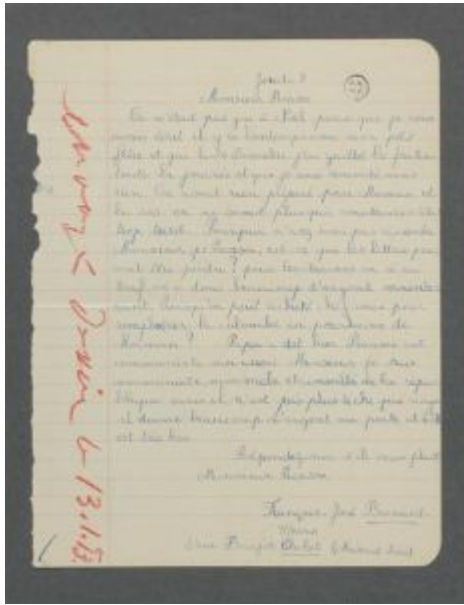
OPP.53:428

Lettre de François José Bernard âgé de 9,5 ans avec une note manuscrite de Picasso: 'envoyé dessin le 13.1.53'.

Vallauris. 13-January/1953. Pencil on envelope. S/U. Musée Picasso, Paris. (Inv APCS2002).

OPP.53:435





Lettre de François José Bernard âgé de 9,5 ans avec une note manuscrite de Picasso: 'envoyé dessin le 13.1.53'. Vallauris. 13-January/1953. Red crayon on paper. S/U. Musée Picasso, Paris. (Inv APCS2002).

OPP.53:436

Jardins à Vallauris. Paris. 15-January/1953. Lithograph. 51,5 x 64,5 cm. Kunstmuseum Liechtenstein, Vaduz. Also Christie's. #223, 9512, 10/31-11/01/00.

OPP.53:008; B.I:733; M:236; BS.55:68p; LV.06*:n/a; MG.14*:2; RM.07*:124p; TO.99*:102





Paysage à Vallauris. Paris. 15-January/1953.
Lithograph on Arches. [49,8 x 64,5] 51 x 65 cm.
Christie's. #228, 1322, 04/28/03.

OPP.53:053; B.I:734; M:237; GB.14*:143;
JM.07*:13; TO.99*:101

Deux enfants jouant et femme couchée
I. Paris. 15-January/1953. Etching, edition
50. [24,1 x 34,3] 26 x 31 cm. Meyerovich
Gallery. 2003.

OPP.53:085; B.I:735; HN.13:188p





Françoise, Claude, Paloma: la lecture et les jeux II (V). Paris. 16-January/1953. Etching with aquatint & roulette, edition 50. [25,5 x 30] 26 x 30,7 cm. Sotheby's. #138, L02192, 07/02/02.

OPP.53:039; B.I:737; Ba:901.5Ca; HK.65:161p; SM.19*:n/a

Françoise, Claude, Paloma: la lecture et les jeux III. Paris. 16-January/1953. Etching, edition 68. [30,5 x 25,4] 25,9 x 30,8 cm. Galerie Boissérée, J. & W. Boissérée GmbH. 2005.

OPP.53:102; B.I:736; Ba:902.Bb; HK.65:161p





Françoise, Claude, Paloma: La lecture et les jeux II (I). Paris. 16-January/1953. Burin, etching, aquatint & scraping. 25,8 x 30,7 cm. Musée Picasso, Paris. Dation 1979.

OPP.53:398; Ba:901.1; MPP:3007

Françoise, Claude, Paloma: La lecture et les jeux II (II). Paris. 16-January/1953. Burin, etching, aquatint & scraping. 25,8 x 30,7 cm. Musée Picasso, Paris. Dation 1979.

OPP.53:399; Ba:901.2; MPP:3008





Françoise, Claude, Paloma: La lecture et les jeux II (III). Paris. 16-January/1953. Burin, etching, aquatint & scraping. 25,8 x 30,7 cm. Musée Picasso, Paris. Dation 1979.

OPP.53:400; Ba:901.3; MPP:3009

Françoise, Claude, Paloma: La lecture et les jeux II (IV). Paris. 16-January/1953. Burin, etching, aquatint & scraping. 25,8 x 30,7 cm. Musée Picasso, Paris. Dation 1979.

OPP.53:401; Ba:901.4; MPP:3010





Françoise, Claude, Paloma: la lecture et les jeux II (V). Paris. 16-January/1953. Etching, aquatint, scraper & burin. 24,9 x 29,8 cm. Musée Picasso, Paris. Dation 1979.

OPP.53:458; Ba:901.5; MPP:3011

Crâne de chèvre sur la table (III).
Paris. 16-20-January/1953. Aquatint & scraper. 51,5 x 66,5 cm. Musée Picasso, Paris. Dation 1979.

OPP.53:457; Ba:903.3; MPP:2994





La famille. Paris. 17-January/1953. Lithograph on Arches, edition 50. [40,2 x 27,5] 39,5 x 29,5 cm. Christie's. #226, 1322, 04/28/03.

OPP.53:054; B.I:738; M:235; CN.56*:21; HK.65:160p;
JR.12*:232p

Crâne de chèvre sur une table (I).
Paris. 17-January/1953. Aquatint & scraping on Rives Vélin paper. 51,6 x 66,7 cm. Musée Picasso, Paris. Dation 1979.

OPP.53:396; MPP:2992





L'italienne (d'après le tableau de Victor Orsel). Vallauris. 18-January/1953. Lithograph. 44,5 x 35,2 cm. Fundación Almine & Bernard Ruiz-Picasso para el Arte. Also Sotheby's. #32, N09217, 11/03/14.

OPP.53:327; M:238.01; MG.18*:114p

Crâne de chèvre sur une table (II). Paris. 18-January/1953. Aquatint & scraping on Rives Vélin paper. 51,6 x 66,7 cm. Musée Picasso, Paris. Dation 1979.

OPP.53:397; MPP:2993





La mère et les enfants (Françoise, Claude et Paloma). Paris. 20-January/1953. Lithograph on Arches, edition 50. 48 x 74 cm. Staatsgalerie Stuttgart. (Inv A 56/1825a). Graphische Sammlung. Also Mr. & Mrs. Mitchell Miller Collection.

OPP.53:023; B.I:739; M:239.01; ED.07*:69; GM.81*:297; ME.82a*:124; RS.88:20p; WC.62*:49; WS.95a*:146

Le crâne de chèvre sur la table (III).

Paris. 20-January/1953. Aquatint, edition 50. [51,3 x 66,5] 51,5 x 66,8 cm. Staatsgalerie Stuttgart. (Inv A 53/1501). Graphische Sammlung. Also Museu Picasso, Barcelona. Sabartés Collection; Musée Picasso, Antibes; Saarlandmuseum, Saarbrücken.

OPP.53:097; B.I:696; Ba:903.3Bb2; MPA:1981.6.15; MPB:70.256; ED.07*:68; GM.81*:283; PF.10*:24; RM.07*:63p; SC.12*:n/a; TO.04*:115; UW.84*:85





La mère et les enfants. Paris. 20-January/1953. Lithograph enhanced with crayon & wash [After *La mère et les enfants (Françoise, Claude et Paloma)*]. 48 x 74 cm. Private collection.

OPP.53:286; M:239.02; JR.12*:233p

L'Italienne (II). Paris. 21-January/1953. Lithograph on Arches, edition 50. [44,7 x 37,5] 44,5 x 38 cm. Art Gallery of Ontario, Toronto. Gift of Sydney Bacon, 1999. Also Christie's. #173, 6683, 10/09/02.

OPP.53:046; B.I:740; M:238.02; BS.55:276; GU.00:157; WC.62*:50; WL.17*:25





Les jeux et la lecture (Françoise, Claude et Paloma). Paris. 23~24-January/1953. Lithograph on Arches, edition 50. [50,5 x 66] [50,5 x 66,3] 48 x 63 cm. The Art institute of Chicago. Also Christie's. #181, 6683, 10/09/02.

OPP.53:045; B.I:741; M:240; DT.78:79; HG.71:186p; MG.80:218p; WS.95a*:147

Le pigeon gris couché. Paris. 27-January/1953. Painted terracotta. 16 x 27 cm. Private collection.

OPP.53:282; HJ.96:33p; JM.07*:69





Le pigeon huppé. Paris. 27-January/1953. Painted plaster. 25 x 29 cm. Private collection.

OPP.53:283; JM.07*:70

La liseuse. Vallauris. 29-January/1953. Oil & enamel on plywood. [114 x 146 cm. Musée Picasso, Paris. Dation 1979.

OPP.53:088; MPP:207; PP.53:003; Z.XV:237; AB.12*:240p; MI.53*:179; MP.85:181; PA.79a*:333; SY.11*:n/a; UP.00:985





Colombe aux oeufs. Vallauris. 29-January/1953. White earthenware figure, decoration in engobes. 14,8 x 22 x 25,5 cm. Musée Picasso, Paris. Dation 1979.

OPP.53:218; MPP:3746; DU.94*:n/a;
ME.82a*:125; MP.85:489; PA.79a*:n/a

Tête de femme. Vallauris. 29-January/1953. White earthenware figure, decoration in black engobes. 50 x 32,5 x 35 cm. Musée Picasso, Paris. Dation 1979.

OPP.53:222; MPP:3716; HN.13:230p; MP.85:488;
PA.08b*:n/a; PA.79a*:n/a; TE.21*:195





La lecture. Vallauris. [24] 29-January/1953. Oil on canvas mounted on plywood. [92 x 73] 93,3 x 75,2 cm. Helly Nahmad Collection, Monaco/London. Formerly Sotheby's. #79, 11/08/95; The Art Institute of Chicago. Gift of Mr. and Mrs. Arnold H. Maremont through the Kate Moremont Foundation; Sotheby's. #64, 05/17/90.

OPP.53:237; PP.53:002a; Z.XV:234; CH.68a*:49; HG.71:157p; LO.98b*:n/a; MI.53*:180; RT.99*:57; WC.62*:45

Colombe. Vallauris. 29-January/1953. Bronze. 17 x 28 x 12 cm. Private collection.

OPP.53:326; PP.53:001d; WS:473; MA.86*:30





La lecture et les jouets (Françoise, Claude et Paloma). Vallauris. 1-February/1953. Ripolin on plywood. 87 x 137 cm. Acquavella Galleries, NY.

OPP.53:175; PP.53:012; Z.XV:243;
BA.03a*:212; JR.12*:137p; MI.53*:178;
WS.95a*:148

Femme au chien. Vallauris. 3-February/1953. Oil on plywood [canvas]. [130 x 97] 129,9 x 96,8 cm. Sotheby's. #28, N09860, 05/14/18.

OPP.53:120; PP.53:005; Z.XV:236; DD.61:244p;
LC.81*:n/a; PA.80a*:33; WW.91:507p





Maternité sur fond blanc. Vallauris. 4-February/1953. Ripolin on plywood. 130 x 97 cm. Private collection.

OPP.53:243; PP.53:015; Z.XV:247; DQ.74:100p; JR.10*:174p; JR.12*:145p; MG.13*:107p; MI.53*:177

Le déjeuner. Vallauris. 6-February/1953. Oil on plywood. 98 x 130 cm. Marina Picasso Collection. (Inv 13250). Courtesy Galerie Jan Krugier, Geneva.

OPP.53:007; PP.53:013; Z.XV:244; BS.55:293p; EM.55:239p; HK.65:172p; MI.53*:176; MP.81*:256; WS.94:103p





Tête de femme. Vallauris. 6-february/1953. Terracotta decorated with India ink & chalk. 28 x 9 cm. Private collection.

OPP.53:287; JR.12*:282p

La chouette. Vallauris. 7-February/1953. Hand-painted terracotta. 34,5 cm. Sotheby's. #6, N10786, 11/16/21.

OPP.53:454





Le hibou gris. Cannes. 9-February/1953.
Handpainted terracotta. [34,5] 34,7 cm. Christie's.
#396, 15979, 11/12/18. Formerly Sotheby's.
#355, N08486, 11/05/08.

OPP.53:204; WS:403.IIIe; GR.74:161

Femme et chien jouant, fond bleu
(Françoise Gilot). Paris. 10-
February/1953. Oil on plywood. 81 x 100
cm. Helly Nahmad Collection,
Monaco/London. Formerly Christie's. #74,
03/25/1990.

OPP.53:242; PP.53:006; Z.XV:245;
BF.14:54p; HN.13*:195p; JR.12*:136p;
LO.98b*:n/a; MI.53*:174; RT.99*:44





Homme barbu. Vallauris. 21-February/1953. Decorated (slip & ceramic pastel) & partially glazed ceramic; square round plate. 24 cm. Sotheby's. #208, L15007, 06/25/15.

OPP.53:342

Abstraction géométrique. Vallauris. 21-February/1953. Decorated (slip & ceramic pastel) ceramic; round plate. 24,5 cm. Sotheby's. #224, L15007, 06/25/15.

OPP.53:343





Huguette Ramié attendant son fils Dominique. Vallauris. 21-February/1953. Pencil, colored pencil & pastel on paper from a sketchbook. 20,8 x 13,4 cm. Espace Tajan. #3, 2121, 03/17/21.

OPP.53:452

Soleil. Vallauris. 21-February/1953. Blue ink. 27 x 21 cm. Piasa. #36, 2142, 02/15/24. Formerly Max Pellequer Collection.

OPP.53:471





Le hibou (rouge et blanc). Vallauris. 22-February/1953. Earthenware. 34,3 cm. Christie's. #1B, 12145, 11/16/16.

OPP.53:356; WS:403.III; AB.57*:100p;
NY.58e*:52; NY.69b*:33p

Buste de femme. Vallauris. 26-February/1953. Oil on canvas [OIC]. 61 x 46 cm. Private collection.

OPP.53:470; PP.53:007; Z.XV:236b; DD.61:245p





La galloise. Vallauris. 28-February/1953. Oil on canvas. 15,7 x 20,8 cm. Richard Gray Gallery, Chicago. 2005.

OPP.53:101

Visage et hirondelle (Pour le mouvement de la Paix au Japon). Vallauris. 28-February/1953. India ink on fabric mounted on japan paper. 27 x 24 cm. Christie's. #436, 4027, 04/28-29/15.

OPP.53:334





Femme assise dans un fauteuil (Françoise). Vallauris. 5-March/1953. Oil on panel. 100 x 80 cm. Sotheby's. #55, N09139, 05/07/14. Formerly Helly Nahmad Collection, Monaco/London; Christie's. #31, 6469, 06/25/01; Sotheby's #L65, 12/01/87.

OPP.53:005; PP.53:008; Z.XV:239; BE.09:132p; EM.55:222p; HN.13*:177p; NY.53b*:10; NY.53l*:10

Abstraction quatre couleurs. Vallauris. 6-March/1953. Painted & glazed ceramic, round plate. 22 cm. Sotheby's. #225, L15007, 06/25/15.

OPP.53:172





Profil de femme. Vallauris. 6-March/1953. Painted terracotta ceramic. 9,7 x 6,4 cm. Jane Kahan Gallery. 2005. Formerly Christie's. #508, 9036, 11/19/98.

OPP.53:195; GD.96:188p

Femme assise en costume rouge sur fond bleu (Françoise). Vallauris. 6-March/1953. Oil on wood. [92] 92,1 x 73 cm. Christie's. #23, 2782, 05/08/13. Formerly Helly Nahmad Gallery, London; Sotheby's. #82, 11/08/95.

OPP.53:254; PP.53:010; Z.XV:241; FM.00:18p;
LO.98b*:n/a; MM.60*:198; RT.99*:43; TO.64*:253;
TO.88*:5





La femme à l'écharpe. Vallauris. 6-March/1953. Oil on canvas [OIC]. 92 x 73 cm. Mr. and Mrs. Louis N. Cohen Collection.

OPP.53:309; PP.53:009; Z.XV:240; CH.68a*:50; NY.53b*:9

Quatre pastilles. Vallauris. 6-March/1953. Painted & glazed ceramic round plate. 22,6 cm. Sotheby's. #679, L16005, 02/05/16. Formerly Marina Picasso Collection.

OPP.53:350; KU.99*:30; VC.98*:29





Femme jouant avec chien. Vallauris. 8-March/1953. [Ripolin] Enamel on plywood. 81 x 100 cm. Museum Sammlung Rosengart, Luzern. Siegfried & Angela Rosengart Collection.

OPP.53:108; PP.53:014; Z.XV:246; CP.95:98p; GR.71:10; JL.71:269p; KB.01:145; MD.02:301p; MI.53*:173; PD.69:68p; UP.00:986; WS.93*:110; WW.91:506p

Portrait de Staline. Vallauris. [12~19] 8-March/1953. [Charcoal] Pen & ink (Reproduced in Les Lettres françaises 456, 03/12/1953). S/U. Private collection.

OPP.53:229; PP.53:015a; JF.96:153p; PL.03:18; TH.75:195





Plat à la tête de chèvre. Vallauris. 9-March/1953. White clay, painted in engobes. 40 cm. Museo Picasso, Málaga. Gift of Christine Ruiz-Picasso.

OPP.53:165; MPM:1.73A; DP.20*:189; GS.03:1.121; NC.17*:128; TH.75:199

Visage. Vallauris. 10-March/1953. Painted & partially glazed white earthenware plate, edition 400. 20,5 cm. Sotheby's. #698, W01402, 10/24/01.

OPP.53:029; AR:179; B.III:40





Courses de taureaux (Corrida). Vallauris. 11-March/1953. Ceramic plate painted & partially glazed, edition 200. [44 x 44] 42 x 42 cm. Sotheby's. #448, N07717, 11/02/01.

OPP.53:010; AR:181; HK.14*:147p

Corrida. Vallauris. 11-March/1953. White earthenware plate, oxidized paraffin decoration, white enamel bath, painted brown & green. [43,5] 42 cm. Sotheby's. #407, N07931, 10/31/03.

OPP.53:059; AR:182; B.III:41





Corrida. Cannes. 11-March/1953. White earthenware hollow round dish, decoration in engobes. 42 cm. Artcurial. #422, 1331, 10/22/07.

OPP.53:202; AR:183

Corrida. Vallauris. 11-March/1953. White earthenware clay, oxidized paraffin decoration, white enamel bath. 42 cm. Private collection.

OPP.53:478; AR:184





Portrait de Staline. Paris. 12~19-March/1953. Print (Published in Les Lettres françaises 456, 03/12/1953) [After *Portrait de Staline*]. 60 x 42,5 cm. Musée Picasso, Paris. (Inv 515AP/H/51/1;APPR27).

OPP.53:306; AB.00*:173; BP.21:82p; EC.16:168; GB.87:157; GC.96:31p; GU.00:159; JR.12:33p; LU.93:401; LZ.06:36; MM.02:59p; MM.07:37p; NC.10:56; OW.13:150p; PA.19d:220p; PD.09:376p; PF.10:27p; RM.07:14p; TO.04:50p; WR.96:445p; WS.93:43p

Le bouquet. Vallauris. 15-March/1953. Oil on plywood [Oic]. 92 x 73 cm. Private collection.

OPP.53:359; PP.53:016; Z.XV:248; UW.93:20a



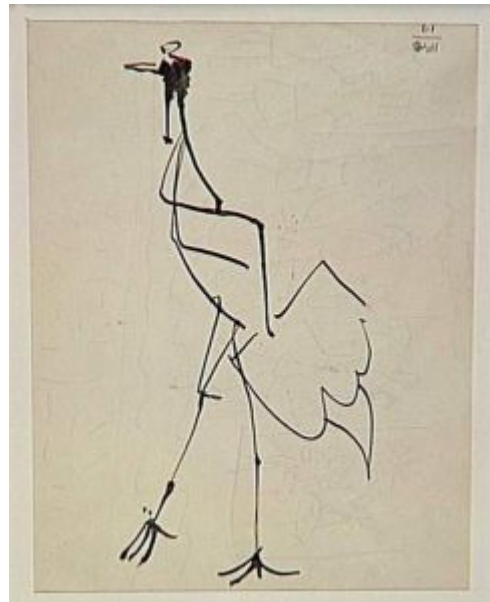


Femme assise (Françoise). Vallauris. 19-March/1953. Oil on canvas. [22,2 x 15,9] 22,2 x 16,4 cm. Christie's. #1A, 15977, 11/11/18. Formerly Christie's. #334, 1430, 11/04/04; Marina Picasso Collection.

OPP.53:077

La grue. Vallauris. Spring/1953. Pen & India ink [Reverse of *Au Quartier Latin*]. 27 x 21 cm. Musée Picasso, Paris. Dation 1979.

OPP.53:076; MPP:1413.v; PP.53:027





Paloma sur un fond rouge. Vallauris. [Spring]/1953. Oil on board. 124,5 x 101,5 cm. Paloma Ruiz-Picasso Collection.

OPP.53:251; PP.53:033; Z.XV:263; JR.12*:159p;
ME.82a*:126; MI.01*:154

Enfant jouant. Vallauris. [Spring]/1953. Pencil on paper. 26 x 18,6 cm. Sotheby's. #127, L20005, 02/19/20. Formerly Marina Picasso Collection.

OPP.53:444; WS.95a*:136





Une pique. Vallauris. 21-March/1953. Ceramic plate. 36,8 cm. Sotheby's. #35, NY7382, 11/10/99.

OPP.53:058; GR.74:128; GR.85:100

La commode chinoise. Vallauris. 22-March/1953. Oil on plywood. [146 x 114] 147,3 x 114,3 cm. Virginia Museum of Fine Arts, Richmond. (Inv 83.43). Mr. and Mrs. Paul Mellon Collection.

OPP.53:300; PP.53:017; Z.XV:249; YB.99*:219





Gros oiseau Picasso. Vallauris. 23-March/1953. Ceramic vase, edition 175. 57,5 cm. The Museum of Art, Fort Lauderdale. Also Sotheby's. #136, 10/25/00.

OPP.53:016; AR:185; CC.01*:73p; CE.04*:257

Tauromachie. Vallauris. 23-March/1953. Painted ceramic; square dish. 32 cm. Sotheby's. #166, L15007, 06/25/15.

OPP.53:340





Ébauche de scène taumachique en médaillon. Vallauris. 23-March/1953. Painted ceramic; square plate. 33,3 cm. Hélène Bailly Gallery. Formerly Sotheby's. #18, N10249, 11/26/19; Marina Picasso Collection.

OPP.53:442; GE.19*:n/a

Tête de femme (Françoise). Vallauris. 24-March/1953. Oil on canvas. [55 x 46] 61 x 51,4 cm. Private collection. Formerly Sotheby's. #436, NY7306, 05/12/99; Marina Picasso Collection. (Inv 13252).

OPP.53:041; PP.53:019; GS.85*:115; YM.86*:PM-19





Tête de femme. Vallauris. 24-March/1953. Oil & Ripolin on canvas. [46 x 38] 45,9 x 37,7 cm. Sotheby's. #44, N10786, 11/16/21.

OPP.53:404; PP.53:018; Z.XV:251

Tête de femme (Françoise). Vallauris. 25-March/1953. Oil on canvas. 65,4 x 54 cm. Evelyn Aimis Fine Art, Miami. 2006. Formerly Sotheby's. #281, N07792, 05/02/02.

OPP.53:032; PP.53:020; Z.XV:250





Femme assise dans un fauteuil sur fond blanc.
Vallauris. 25-March/1953. Oil on board. 100,5 x 81 cm.
Sotheby's. #20, L17002, 03/01/17.

OPP.53:267; CG.12*:97; GB.14*:77; SP.96:5; SZ.96*:20

La poupée. Vallauris. End-March/1953. Wood. 19,5 x 0.25 x 0.2 cm.
Private collection, Switzerland.

OPP.53:087; PP.53:163.d; WS:484; CE.04:36; HK.65:144p;
MM.02*:237p; WR.80*:409p; WS.94:98p; WS.95a:236p





La poupée. Vallauris. End-March/1953. Wood. 19,5 x 0.25 x 0.2 cm. Private collection, Switzerland.

OPP.53:091; PP.53:163.g; WS:487;
MM.02*:234-235p; WR.80*:409p; WS.95a:236p

La poupée. Vallauris. End-March/1953. Wood. 19,5 x 0.25 x 0.2 cm. Private collection, Switzerland.

OPP.53:092; PP.53:163.a; WS:481; CE.04:36; MM.02*:236p;
WR.80*:409p; WS.94:98p; WS.95a:236p





La poupée. Vallauris. End-March/1953. Wood. 19,5 x 0.25 x 0.2 cm. Private collection, Switzerland.

OPP.53:093; PP.53:163.c; WS:483; CE.04:36; HK.65:144p; MM.02*:236p; WR.80*:409p; WS.94:98p; WS.95a:236p

La poupée. Vallauris. End-March/1953. Wood. 19,5 x 0.25 x 0.2 cm. Private collection, Switzerland.

OPP.53:094; PP.53:163.b; WS:482; CE.04:36; HK.65:144p; MM.02*:236p; WR.80*:409p; WS.94:98p; WS.95a:236p





La poupée. Vallauris. End-March/1953. Wood. 19,5 x 0.25 x 0.2 cm.
Private collection, Switzerland.

OPP.53:095; PP.53:163.e; WS:485; CE.04:36; MM.02*:237p;
WR.80*:409p; WS.94:98p; WS.95a:236p

La poupée. Vallauris. End-March/1953. Wood. 19,5 x 0.25 x 0.2 cm.
Private collection, Switzerland.

OPP.53:096; PP.53:163.f; WS:486; CE.04:36; HK.65:144p;
MM.02*:237p; WR.80*:409p; WS.94:98p; WS.95a:236p





La poupée. Vallauris. [1952] End-March/1953. Wood. S/U. Private collection.

OPP.53:277; PP.53:163h; CE.04:36; HK.65:144p

Tête de femme brune de face. Vallauris. 27-March/1953.
Oil on canvas. 24 x 16 cm. Private collection.

OPP.53:205; EC.09*:18; LE.07*:67





Tête de femme penchée. Vallauris. 30-March/1953. Oil on canvas [OiC]. 27 x 22 cm. Private collection.

OPP.53:196; PP.53:024; Z.XV:259; BS.55:226

Femme s'essuyant les pieds (Françoise). Vallauris. 30-March/1953. Oil and sgraffito on canvas. 46 x 33 cm. Christie's. #44, 20663, 06/28/22. Formerly Christie's. #79, 2045, 11/06/08; Sotheby's. #116, NY7249, 11/17/98.

OPP.53:197; PP.53:023; Z.XV:255





Femme à sa toilette. Vallauris. 30-March/1953. Oil on canvas. 46 x 38 cm. E and R Cyzer 20th Century Art. 2014. Formerly André Lefèvre Collection, Paris.

OPP.53:325; PP.53:022; Z.XV:254; PA.64b*:236



Femme assise. Vallauris. [Spring] 31-March/1953. Oil on canvas. [50,8 x 59,6] 46 x 38 cm. Christie's. #15, 2554, 05/01/12.

OPP.53:257; PP.53:021; Z.XV:253; LO.58*:72; LO.62c*:51; OS.55*:28; OS.56*:295/35/43/42; PA.53c*:n/a

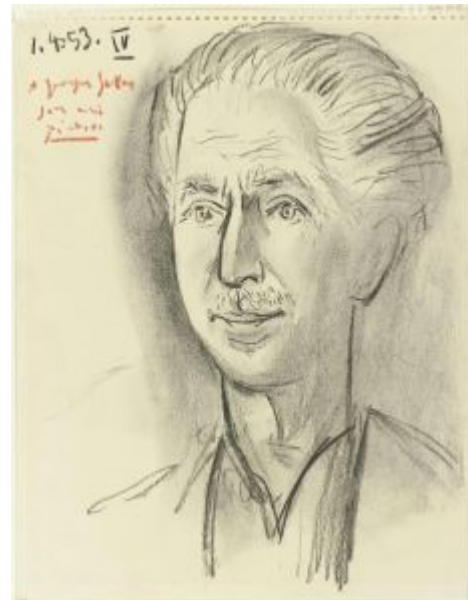


M. Georges Salles III. Vallauris. 1-April/1953. Charcoal on paper from sketchbook. 30,6 x 24 cm. Musée National d'Art Moderne, Centre Georges Pompidou, Paris. (Inv AM.3554D). Legs M. Georges Salles,1967.

OPP.53:068; LE.21*:90

M. Georges Salles IV. Vallauris. 1-April/1953. Charcoal on paper from sketchbook. 30,6 x 24 cm. Musée National d'Art Moderne, Centre Georges Pompidou, Paris. (Inv AM.3553D). Legs M. Georges Salles,1967.

OPP.53:113; LE.21*:91





M. Georges Salles. Vallauris. 1~2-April/1953. Charcoal on paper from sketchbook. 30,6 x 24 cm. Musée National d'Art Moderne, Centre Georges Pompidou, Paris. (Inv AM.3552D). Legs M. Georges Salles, 1967.

OPP.53:112; LE.21*:89

M. Georges Salles I. Vallauris. 1-April/1953. Charcoal on paper from sketchbook. 30,6 x 24 cm. Musée National d'Art Moderne, Centre Georges Pompidou, Paris. (Inv AM.3551D). Legs M. Georges Salles, 1967.

OPP.53:111; LE.21*:88





M. Georges Salles. Vallauris. 2-April/1953. Charcoal on paper. 30,6 x 24 cm. Musée National d'Art Moderne, Centre Georges Pompidou, Paris. (Inv AM.3549D). Legs M. Georges Salles,1967.

OPP.53:109; LE.21*:92



M. Georges Salles III. Vallauris. 2-April/1953. Charcoal on paper from sketchbook. 30,6 x 24 cm. Musée National d'Art Moderne, Centre Georges Pompidou, Paris. (Inv AM.3550D). Legs M. Georges Salles,1967.

OPP.53:110; LE.21*:94



M. Georges Salles. Vallauris. 2-April/1953. Charcoal on paper. 30 x 23,5 cm. Musée National d'Art Moderne, Centre Georges Pompidou, Paris. (Inv AM.1938D). Legs M. Georges Salles, 1967.

OPP.53:258; LE.21*:93

Portrait d'un garçon (Claude). Vallauris. 3-April/1953. Pencil on paper. 25,7 x 20,4 cm. Private collection.

OPP.53:278; WS.95a*:139





Trois poissons. Vallauris. 3-April/1953. Red terracotta, incised & painted with slips. 30 x 33 x 11 cm. Private collection.

OPP.53:296; JR.10*:238p

Pichet à anse. Vallauris. 4-April/1953. White earthenware pitcher, partially glazed, painted in blue, black & brown, edition 200. 19 x 11,5 x 28 cm. Sotheby's. #450, N07717, 11/02/01.

OPP.53:035; AR:186; CE.04*:248





Pichet gothique aux oiseaux. Vallauris. 10-April/1953. White earthenware pitcher, decoration in engobes, knife engraved, glaze inside, painted beige & black, edition 100. [27,9] 28 x 18 cm. Christie's. #476, 5814, 04/07/05.

OPP.53:080; AR:187; CE.04*:253

Pichet gothique décoré de trois hiboux. Vallauris. 10-April/1953. White clay, turned & modeled, decorated with engobes & incisions. 28 x 18 x 29 cm. Musée Picasso, Paris. Don du conseil d'administration de l'association Loisirs et Culture du comité d'entreprise Renault-Billancourt, 1986.

OPP.53:456; MPP:1986.46





Chèvre. Vallauris. 11-April/1953. Painted & glazed ceramic; square round plate. 24,9 cm. Sotheby's. #1, N09727, 05/18/17. Formerly Marina Picasso Collection.

OPP.53:375

Course de taureaux (Corrida). Vallauris. 14-April/1953. White earthenware plate. 17 cm. Musée Municipal d'Art Moderne, Céret. Inv MAMC CER 1991.0294.

OPP.53:230; GR.74:175; TO.99*:205





Centaure et visage. Vallauris. 15-April/1953. Chamotted red earthenware pitcher, engobe & paraffin decoration, black enamel, edition 125. [27] 26,5 x 22 cm. Sotheby's. #408, N07931, 10/31/03.

OPP.53:060; AR:188

Coupelle taumachie. Vallauris. 15-April/1953. Terracotta, decorated in engobes & glazed. 5,2 x 16,4 cm. Musée Municipal d'Art Moderne, Céret. (Inv MAMC 1991.303).

OPP.53:366; CE.04*:149





Tête de taureau. Vallauris. 15-April/1953. Pencil. 31 x 23 cm. Private collection. Formerly Christie's. #141, 02/12/91.

OPP.53:466; PP.53:024b

Picador. Vallauris. 16-April/1953. White earthenware plate. 19,9 cm. Musée Municipal d'Art Moderne, Céret. Inv MAMC CER 1991.0309.

OPP.53:231; CE.04*:176; GR.74:185; TO.99*:206





Leçon de dessin (Avec Paloma, Claude et Françoise).

Vallauris. 16-April/1953. Colored wax crayons & pencil on paper.
[66 x 49,5] 66 x 50,2 cm. Christie's. #223, 15005, 11/14/17.

OPP.53:279; EQ.87:82-83p; QP.64:167p; WR.96*:442p;
WS.94:94p; WS.95a:248p

Coupelle taumachie. Vallauris. 16-April/1953. Terracotta, decorated in engobes & glazed. 5,5 x 17,5 cm. Musée Municipal d'Art Moderne, Céret. (Inv MAMC 1991.312).

OPP.53:365; CE.04*:163





Coupelle taumachie. Vallauris. 16-April/1953. Terracotta, decorated in engobes & glazed. 6,8 x 17,5 cm. Musée Municipal d'Art Moderne, Céret. (Inv MAMC 1991.307).

OPP.53:367; CE.04*:165

Coupelle taumachie. Vallauris. 16-April/1953. Terracotta, decorated in engobes & glazed. 6,6 x 17,8 cm. Musée Municipal d'Art Moderne, Céret. (Inv MAMC 1991.306).

OPP.53:368; CE.04*:167





Coupelle tauromachie. Vallauris. 17-April/1953. Terracotta, decorated in engobes & glazed. 6,5 x 17,7 cm. Musée Municipal d'Art Moderne, Céret. (Inv MAMC 1991.314).

OPP.53:369; CE.04*:164

Pichet aux arums. Vallauris. 20-April/1953. White earthenware pitcher decoration in engobes, engraved under glaze, painted blue, green, black & yellow, edition 350 [Variant of *Pichet aux arums*]. 20 cm. Sotheby's. #409, N07931, 10/31/03.

OPP.53:064; AR:189





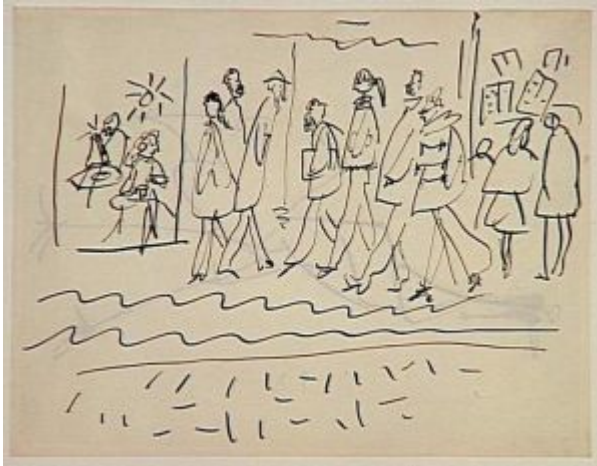
Pichet aux arums. Vallauris. 20-April/1953. Earthenware pitcher, decoration in engobes and knife engraved. 28,3 x 27,7 x 17 cm. Musée Pierre Noël, Saint-Dié. On loan from Musée Picasso, Paris.

OPP.53:221; MPP:3717; MP.85:490; PA.08b*:n/a;
RI.03a:24

Huit personnages. Paris. [14-May]/1953. Pen on paper. 21 x 27 cm. Private collection.

OPP.53:177; BA.03a*:242





Au Quartier Latin. Vallauris. May/1953. Pen & India ink [Obverse of *La grue*]. 21 x 27 cm. Musée Picasso, Paris. Dation 1979.

OPP.53:062; MPP:1413.r; PP.53:026

Saint-Germain-des-Prés: neuf personnages. Vallauris. May/1953. India ink on paper. 21 x 27 cm. Fundación Almine & Bernard Ruiz-Picasso para el Arte.

OPP.53:315; GB.14*:95





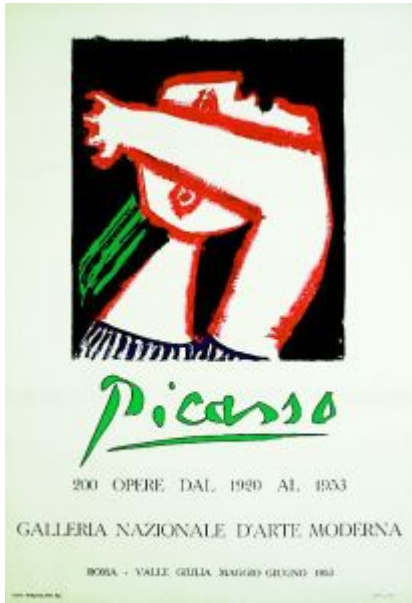
Saint-Germain-des-Prés: cinq personnages.
Vallauris. May/1953. India ink on paper. 21 x 27
cm. Fundación Almine & Bernard Ruiz-Picasso para
el Arte.

OPP.53:316; GB.14*:96

**Saint-Germain-des-Prés: six
personnages.** Vallauris. May/1953. India
ink on paper. 21 x 27 cm. Fundación
Almine & Bernard Ruiz-Picasso para el Arte.

OPP.53:317; GB.14*:97





Picasso: 200 Opere dal 1920 al 1953. Vallauris.
May~June/1953. Poster for the Galleria Nazionale d'Arte Moderna.
100 x 70 cm. Musée Picasso, Paris.

OPP.53:290; GU.00:143

Tête d'homme barbu. Vallauris. 4-May/1953. Pen & ink.
27 x 21,2 cm. Private collection. Formerly Sotheby's. #107,
02/15/91.

OPP.53:079; PP.53:027a





Le broc. Vallauris. 4-May/1953. Oil on canvas [OiC]. 54 x 65 cm. Private collection.

OPP.53:408; PP.53:025; Z.XV:262

Retour de Rome, Sabartés aviateur. Paris. 6-May/1953. Ink on paper. 21 x 27 cm. Christie's. #5, 12610, 03/31/16.

OPP.53:352; BA.74*:29; CR.74:1082





Tête sur fond noir (Françoise). Paris. 9-May1953.
Lithograph on Arches, edition 50. [69,3 x 54] 69,5 x 54,5 cm.
Christie's. #199, 6532, 12/18/01.

OPP.53:028; B.I:742; M:241; PE.17*:142p; WC.62*:51

Torse de femme (L'Egyptienne). Paris. 11-May/1953.
Aquatint, edition 50. 83,4 x 47,3 cm. Staatsgalerie
Stuttgart. (Inv A 54/1630). Graphische Sammlung. Also
Christie's. #93, 2475, 10/25-26/11.

OPP.53:086; B.I:746; Ba:906.IIBb; MPA:1981.6.18;
BS.55:227; ED.07*:70; GM.81*:296; ME.82a*:127;
MM.02*:193p; WL.17*:26





L'égyptienne, 1er état. Paris. 11-May/1953. Aquatint. 83,5 x 47,4 cm. Musée Picasso, Paris. Dation 1979.

OPP.53:393; MPP:3012

L'égyptienne, IIe état. Paris. 11-May/1953. Aquatint. 83,5 x 47,4 cm. Musée Picasso, Paris. Dation 1979.

OPP.53:394; MPP:3013; LE.21*:266





Portrait de Françoise à la résille. Paris. 13-May/1953.
Aquatint, drypoint & scraper, edition 9. 42,6 x 32,6 cm.
Sotheby's. #308,N07888, 05/02/03.

OPP.53:056; Ba:907

Quatre personnages. Paris. [14-
May]/1953. Pen on paper. 21 x 27 cm.
Private collection.

OPP.53:176; BA.03a*:240





Six personnages. Paris. [14-May]/1953. Pen on paper. 21 x 27 cm. Private collection.

OPP.53:178; BA.03a*:241

Cinq personnages. Paris. [14-May]/1953.
Pen on paper. 21 x 27 cm. Private collection.

OPP.53:179; BA.03a*:243





Quatre personnages. Paris. [14-May]/1953. Pen on paper. 21 x 27 cm. Private collection.

OPP.53:180; BA.03a*:244

Huit personnages. Paris. [14-May]/1953. Pen on paper. 21 x 27 cm. Private collection.

OPP.53:181; BA.03a*:246





Trois personnages. Paris. 14-May/1953. Pen on paper. 21 x 27 cm. Private collection.

OPP.53:182; BA.03a*:247

Santé. Paris. 14-May/1953. Pen on paper. 21 x 27 cm. Private collection.

OPP.53:183; BA.03a*:248





Deux personnages. Paris. 14-May/1953. Pen on paper. 21 x 27 cm. Private collection.

OPP.53:184; BA.03a*:250

Cinq personnages. Paris. 14-May/1953.
Pen on paper. 21 x 27 cm. Private
collection.

OPP.53:185; BA.03a*:249





Trois personnages. Paris. 14-May/1953. Pen on paper. 21 x 27 cm. Private collection.

OPP.53:186; BA.03a*:251

Portrait de femme (Claire Roy) (Pour Claire Roy). Paris. 19-May/1953. Pen & ink on paper. 15 x 12 cm. Christie's. #221, 17192, 06/19/19.

OPP.53:433





Femme dans un fauteuil. Vallauris. [June]/1953. Graphite. 108 x 74 cm. Kunstmuseum Basel. (Inv 2019.3). Kupferstichkabinett, Schenkung der Christoph Merian Stiftung aus dem Legat Frank und Alma Probst 2019.

OPP.53:407; PP.53:118a; Z.XV:258

Vase au décor pastel. Vallauris. 4-June/1953. Chamotted red earthenware vase, decoration in pastels, painted white, green, yellow, blue & black, edition 200. [31,5] 32,5 x 18 cm. Sotheby's. #451, N07717, 11/02/01.

OPP.53:033; AR:190; IG.89*:n/a; LR.07*:41





Femme couchée. Vallauris. 4-June/1953.
Charcoal. 50,5 x 66 cm. Private collection.

OPP.53:082; PP.53:028; Z.XV:256

Cruche aux trois têtes. Vallauris. 4-June/1953. White
clay, decorated with pastel. 28 x 22 x 20 cm. Museo
Picasso, Málaga. Gift of Christine Ruiz-Picasso.

OPP.53:166; MPM:1.74A; DP.20*:158; GS.03:1.122





Coupe. Vallauris. 5-June/1953. Red earthenware bowl, decoration in engobes & pastels. 13,5 x 30 cm. Musée Picasso, Paris. Dation 1979.

OPP.53:220; MPP:3718; MP.85:491

Femme au chapeau. Vallauris. 5-June/1953. Oil on canvas [OiC]. 100 x 81 cm. Private collection.

OPP.53:409; PP.53:029; Z.XV:264





Le fumeur (Autoportrait). Cannes. 6-June/1953. Oil on panel. 100 x 81 cm. Sotheby's. #42, N08239, 11/07/06. Formerly Mr. & Mrs. Gifford Phillips Collection.

OPP.53:171; PP.53:030; Z.XV:265; DK.61*:39; EG.66*:25p; LA.62*:94; MU.55*:117; NY.53b*:26; PD.69*:n/a

Lettre de l'artiste à Daniel-Henry Kahnweiler.
Vallauris. 7-June/1953. Ink on paper [Obverse of *Lettre de l'artiste à Daniel-Henry Kahnweiler*]. 27 x 21 cm.
Musée Picasso, Paris. (Inv 515AP/C/70/1/6).

OPP.53:391

Vallauris le 7 Juin 1953 - Copie

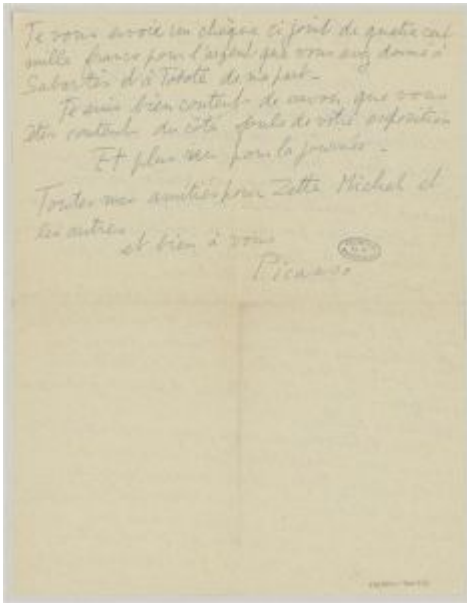
Mon cher Ami Kahnweiler

Pour l'affaire de tableau appelé "Beyoglu" rétrospectivement tous les tableaux exposés à Rome dans les prochains jours n'ont pas à s'en occuper pour moi de ce que je ferai quand ils seront rentrés ce que je veux faire.

Te ne vois pas pourquoi on continuerait à venir à Milan et à Venise les tableaux après l'annonce financière de Rome.

Te salue que immédiatement après la fermeture de l'exposition de Rome tous mes tableaux et sculptures me seront vendus, ce qui peut avoir part de ton à Paris et ceux de Vallauris à Vallauris. Pour les affaires d'argent j'arrangerai cela avec Reale.

Pour l'histoire du vase (comme son dit) si vous l'avez acheté parce que je ne suis pas et le trouvez trop cher, s'il n'est pas à me le rendre et je vous enverrai immédiatement les 300.000. L'autre vase que vous ne voulez pas à la fin de l'exposition vous pouvez bien me le faire envoyer chez moi.



Lettre de l'artiste à Daniel-Henry Kahnweiler. Cannes. 7-June/1953. Ink on paper [Reverse of *Lettre de l'artiste à Daniel-Henry Kahnweiler*]. 27 x 21 cm. Musée Picasso, Paris. (Inv 515AP/C/70/1/6).

OPP.53:395

Tête de femme. Vallauris. 7-June/1953. Oil on canvas [OIC]. 35 x 27 cm. Private collection.

OPP.53:406; PP.53:031; Z.XV:257





Cafetière et compotier de cerises. Vallauris. 9-June/1953. Oil on plywood [OïC]. 81 x 100 cm. Galerie Louise Leiris, Paris.

OPP.53:244; PP.53:032; Z.XV:261; JB.92:324p; MJ.55*:123; NY.53b*:13

Le transformateur. Vallauris. 10-June/1953. Oil on canvas. 19 x 27 cm. Sotheby's. #469, L08008, 06/26/08. Formerly Sotheby's. #174, L03005, 06/03/03.

OPP.53:057; PP.53:036; Z.XV:274; BS.75*:59; KG.71:66; KG.85:66; OS.04*:n/a





Le transformateur. Vallauris. 10-June/1953. Oil on canvas. [22,2 x 27] 22,2 x 25,7 cm. Private collection, courtesy Martin Lawrence Galleries. Formerly Phillips. #144, NY010822, 11/16/22; Christie's. #508, 1105, 02/07/13; Sotheby's. #311, N08676, 11/03/10.

OPP.53:226; PP.53:035; Z.XV:273; CT.23*:29; KG.71:65; KG.85:65

Paysage de Vallauris. Vallauris. 10-June/1953. Oil on canvas. 18,7 x 26,7 cm. The Solomon R. Guggenheim Museum, NYC. Thannhauser Collection.

OPP.53:303; PP.53:034; Z.XV:272; NY.53b*:24; TC.92:21p





Buste de femme em gris. Vallauris. 12-June/1953. Oil on plywood. 100 x 81 cm. Private collection.

OPP.53:292; JR.10*:157p

Femme dans un fauteuil. Vallauris. 13-June/1953. Oil on plywood. 92 x 73 cm. Bergen Kunstmuseum, Norway. Stenersen Collection.

OPP.53:318; PP.53:037; Z.XV:266; GB.14:90p





Paysage de Vallauris. Vallauris. 14-June/1953.
Oil on canvas. [22 x 33] 22,9 x 34 cm. The
Museum of Fine Arts, Houston. (Inv 84.414). Gift
of Oveta Culp Hobby.

OPP.53:411; PP.53:038; Z.XV:275; CT.23*:30

Paysage au pin. Vallauris. 15-June/1953.
Oil on canvas. [50 x 65] [38,1 x 55,3] 38,1
x 55,2 cm. Private collection. Courtesy
Martin Lawrence Galleries. Formerly
Phillips. #37, NY010722, 11/15/22; Opera
Gallery. 2013; Christie's. #440, 7405,
06/19/07; Sotheby's. #501, NY7649,
05/09/01; Christie's. #698, 9164,
05/14/99.

OPP.53:100; PP.53:041; Z.XV:280;
CT.23*:31; KG.71:69; KG.85:69;
MO.13*:8p, 18p, 32p; NY.53b*:19;
SO.13*:14p





Tête de femme (Françoise). Vallauris. 15-June/1953. Oil on canvas. 35,2 x 27 cm. Christie's. #341, 7859, 06/24/10.

OPP.53:225; PP.53:042; Z.XV:267; DK.61*:40

Maisons devant la coline. Vallauris. 15-June/1953. Oil on canvas. 27 x 41 cm. Private collection.

OPP.53:324; PP.53:039; Z.XV:276; GP.96:317p





Jardins à Vallauris. Vallauris. 15-June/1953. Oil on canvas. 27 x 41 cm. Private collection.

OPP.53:328; PP.53:040; Z.XV:277; NY.53b*:21

Le ciel clair. Vallauris. 16-June/1953. Oil on canvas. 27 x 41 cm. Private collection.

OPP.53:412; PP.53:044; Z.XV:278





Buste de femme. Vallauris. 16-June/1953. Oil on canvas [OïC]. 35 x 24 cm. Private collection.

OPP.53:417; PP.53:043; Z.XVI:5

Femme portant un enfant. Vallauris. 19-June/1953. Part of palm tree & wood painted green, blue, black & white. 173 x 54 x 35 cm. The Picasso Estate.

OPP.53:006; PP.53:069c; WS:478; DD.61:182; EM.55:235p; JR.10*:172-173p; JR.12*:147p; MR.16*:n/a; TG.94*:135; TU.15*:127; WR.96:444p





Femme debout. Vallauris. [Summer]/1953. Bronze. 22,5 x 13,5 x 9 cm. The Hirshhorn Museum and Sculpture Garden, Smithsonian Institution, Washington, DC. (Inv 86.3784). The Joseph H. Hirshhorn Bequest, 1981.

OPP.53:467; PP.53:069b; WS:471

Course de taureaux, oiseau. Vallauris. 22-June/1953. White earthenware vase, decoration in engobes & paraffin, partial brushed glaze, painted red & black, edition 25. 57 x 45,5 x 40 cm. Christie's. #516, 5224, 04/04/07.

OPP.53:106; AR:191; CE.04*:252





La balustrade. Vallauris. 24-June/1953. Oil on canvas. 50 x 61 cm. Christie's. #39, 6919, 06/22/04.

OPP.53:069; PP.53:048; Z.XV:283; KG.71:72; KG.85:72; LP.99:200-201p

Pin au soleil. Vallauris. 24-June/1953. Oil on canvas [OïC]. 27 x 35 cm. Private collection.

OPP.53:405; PP.53:047; Z.XV:282





Le grand ciel. Vallauris. 24-June/1953. Oil on canvas [OiC]. 27 x 35 cm. Private collection.

OPP.53:413; PP.53:045; Z.XV:279

La colline. Vallauris. 24-June/1953. Oil on canvas [OiC]. 50 x 61 cm. Private collection.

OPP.53:414; PP.53:046; Z.XV:281





Le corsage rouge (Françoise). Vallauris. 25-June/1953. Oil on canvas. 34 x 25,1 [25] cm. Sotheby's. #238, NY7648, 05/10/01.

OPP.53:200; PP.53:051; Z.XV:269

Maisons à Vallauris. Vallauris. 25-June/1953. Oil on canvas. [50] 49,6 x 61 cm. Christie's. #424, 1995, 05/07/08. Formerly Justin K. Thannhauser Collection.

OPP.53:201; PP.53:049; Z.XV:284; KG.71:75; KG.85:75; NY.53b*:23





Tête de femme. Vallauris. 25-June/1953. Oil on canvas. 33 x 24 cm. Private collection.

OPP.53:373; PP.53:050; Z.XV:271; LO.17*:n/a

Buste de femme (Françoise). Vallauris. 26-June/1953. Oil on canvas. 60,6 x 49,5 [49,9] cm. Gary Nader Fine Art, Miami. 2013. Formerly Christie's. #149, 7243, 06/20/06.

OPP.53:074; PP.53:053; Z.XV:268; GN.07*:n/a





Buste de femme (Françoise). Vallauris. 26-June/1953. Oil on canvas. 61 x 50 cm. Sotheby's. #16, N09497, 05/09/16.

OPP.53:354; PP.53:052; Z.XV:270

Théière et tasse. Vallauris. 1-July/1953. Oil on canvas. [24 x 33] 24,1 x 32,9 cm. Philadelphia Museum of Art. (Inv 1963.181.53). The Louis E. Stern Collection, 1963.

OPP.53:214; PP.53:055; Z.XV:287; NY.53b*:28





Paysage de Vallauris. Vallauris. 1-July/1953. Oil on canvas. 33 x 46 cm. Christie's. #378, 2556, 05/02/12. Formerly Sotheby's. #154, N08676, 11/03/10.

OPP.53:227; PP.53:054; Z.XV:285; KG.71:76; KG.85:76; TK.64*:60

Buste de femme. Vallauris. 1-July/1953. Oil on canvas. 65 x 54 cm. Catherine Hutin-Blay Collection, Paris. Formerly Jacqueline Roque Picasso Collection.

OPP.53:416; PP.53:061; Z.XVI:4





Théière et tasse. Vallauris. 2-July/1953. Oil on canvas. 27 x 35 cm. Daniel Malingue Collection, Paris.

OPP.53:078; PP.53:058; Z.XV:289; BO.00*:28; BS.55:225; CC.01*:31p; PB.00:28

Théière et tasse. Vallauris. 2-July/1953. Oil on canvas. 24 x 35 cm. Kunstmuseum Basel. (Inv G.1960.38). Besquest of Dr. h. c. Richard Doestsch-Benzinger, Basel, 1960.

OPP.53:305; PP.53:056; Z.XV:286; AH.13*:105





Théière, tasse et citron. Vallauris. 2-July/1953.
Oil on canvas [OïC]. 27 x 35 cm. Private collection.

OPP.53:426; PP.53:057; Z.XV:288

Pichet, scene de plage. Vallauris. 4-July/1953. Hand-glazed ceramic pitcher. 33 cm. Sotheby's. #338, N08024, 11/05/04.

OPP.53:073; GR.74:165





Paysage, couple, femme au singe. Vallauris. 4-July/1953. White earthenware vase, decoration in engobes, partially painted. 27 x 21 x 17,5 cm. Musée Picasso, Paris. Dation 1979.

OPP.53:219; MPP:3719; MP.85:492; VA.04*:n/a

Visage de femme. Vallauris. 7-July/1953. White earthenware pitcher, decoration in engobes, knife engraved under partial brushed glaze, painted green, red, white, blue & red patina, edition 200. 31,5 x 21 cm. Sotheby's. #160, W04714, 10/20/04.

OPP.53:072; AR:192





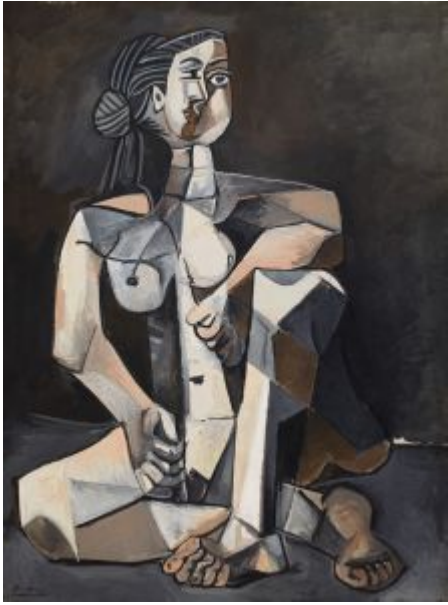
Buste de femme (Françoise). Vallauris. 7-July/1953. Oil on canvas. 61 x 46 cm. Private collection.

OPP.53:312; PP.53:060; Z.XVI:3

Femme au chignon. Vallauris. 7-July/1953. Oil on canvas [OIC]. 28 x 19 cm. Private collection.

OPP.53:415; PP.53:059; Z.XVI:1





Femme nue accroupie (Françoise). Vallauris. 9-July/1953. Oil on canvas. 129,5 x 96,5 cm. The Saint Louis Art Museum. (Inv 196:1953). Gift by exchange and funds given by Mr. & Mrs. Joseph Pulitzer Jr.

OPP.53:001; PP.53:062; Z.XV:292; GB.14:96p; JR.62*:7.1; MR.53:123p; NY.53b*:8; ON.66:41p; TO.04:52p; WR.80*:413p; WR.96:440p; WS.93*:123; WW.91:504p; YB.99*:218

Torse de femme. Vallauris. 9-July/1953. Oil on canvas. 100 x 81 cm. Private collection.

OPP.53:280; PP.53:063; Z.XVI:6; GR.71:9





Femme du barbu. Vallauris. 10-July/1953. Painted & partially glazed white earthenware jug, edition 500. 37,5 x 20,5 cm. Sotheby's. #121, W03703, 03/20/03.

OPP.53:051; AR:193; CE.04*:256; HU.68*:90; LE.21*:329; WW.91:511p

Buste de femme (Françoise). Vallauris. 10-July/1953. Oil on canvas. 81 x 65 cm. Museum Sammlung Rosengart, Luzern. Siegfried & Angela Rosengart Collection.

OPP.53:319; PP.53:064; Z.XVI:7; GB.14:91p





Bouteille et compotier de cerises. Vallauris. 12-July/1953. Oil on canvas. 81 x 100 cm. Private collection, Switzerland. Formerly Christie's. #L60, 04/02/90; Christie's. #46, 11/30/92.

OPP.53:192; PP.53:065; Z.XV:290; JB.92*:136; NY.53b*:12

Buste de femme. Vallauris. 17-July/1953. Oil on canvas. [92 x 73] 91,5 x 73 cm. Tel Aviv Museum of Art. Bequest of Marya Rubinstein Bernard-Adir, New York, 1978, in memory of Dr. Bernard Bernard. Formerly Galerie Louise Leiris, Paris.

OPP.53:245; PP.53:066; Z.XVI:2; MJ.55*:124





Tête de faune. Vallauris. 31-July/1953. Ink on double page. 18,5 x 13,5 cm. Zaidan Gallery. 2014. Formerly Artcurial. #432, 1765, 11/03/09.

OPP.53:212

Les rougets. Vallauris. 2-August/1953. Oil on canvas. 81 x 100 cm. Private collection.

OPP.53:269; PP.53:067; Z.XV:291; NY.53b*:11; TI.71:59





Deux poissons en relief. Vallauris. 5-
August/1953. Modelled, painted, glazed & incised
ceramic; round plate with scalloped edges. 22,5
cm. Sotheby's. #178, L15007, 06/25/15.

OPP.53:341

Poissons en relief. Vallauris. 5-
August/1953. Red terracotta plate. 22,3 cm.
Private collection.

OPP.53:363; CE.04:67





Pichet trois taureaux graves. Cannes. 8-August/1953. Hand painted white terracotta pitcher. 37 x 24 cm. H el ene Bailly Gallery. Formerly Hammer Galleries. 2006.

OPP.53:122

Lettres et documents adress es   Pierre et Miette Brune. Vallauris. 2-September/1953. Telegram. S/U. Artcurial. #70, 2188, 12/13/12.

OPP.53:314





Portrait d'Albert Skira I. Golfe-Juan. 16-September/1953.
Pen & ink. 27,4 x 21 cm. Galerie Kornfeld und Cie, Bern. #118,
06/25/99.

OPP.53:103; PP.53:068



Portrait d'Albert Skira II. Golfe-Juan. 16-
September/1953. Pen & ink. 27,4 x 21 cm. Private
collection.

OPP.53:114; PP.53:068a



Portrait d'Albert Skira III. Golfe-Juan. 16-September/1953.
Pen & ink. 27,4 x 21 cm. Private collection.

OPP.53:115; PP.53:068b



Portrait d'Albert Skira IV. Golfe-Juan. 16-September/1953. Pen & ink. 27,4 x 21 cm. Private collection.

OPP.53:116; PP.53:068c



Portrait d'Albert Skira V. Golfe-Juan. 16-September/1953. Pen & ink. 27,4 x 21 cm. Private collection.

OPP.53:117; PP.53:068d



Portrait d'Albert Skira VI. Golfe-Juan. 16-September/1953. Pen & ink. 27,4 x 21 cm. Private collection.

OPP.53:118; PP.53:068e



Portrait d'Albert Skira VII. Golfe-Juan. 16-September/1953. Blue ballpoint on laid paper. [27,4 x 21] 27,1 x 20,8 cm. KOTTE Autographs GmbH, Rosshaupten.

OPP.53:119; PP.53:068f

Télégramme à Paule de Lazerme. Golfe-Juan. 16-September/1953. Telegram. S/U. Private collection.

OPP.53:439; PE.17:122p





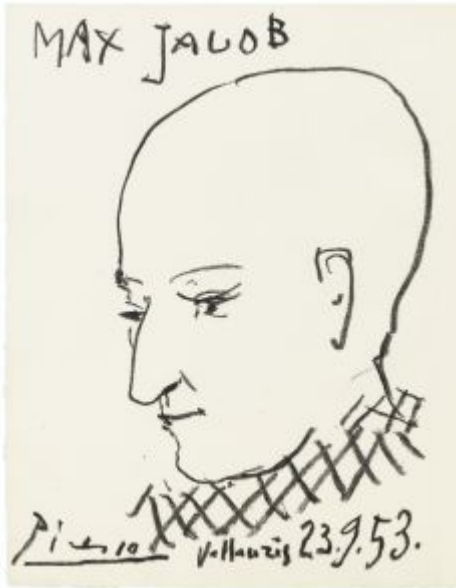
Le visage de la paix. Vallauris. 18-September/1953. Red wax crayon on paper. 30,2 x 21,6 cm. Christie's. #0107, 1874, 09/12/07.

OPP.53:194

La sardane de la paix. Céret. 20-September/1953. Black ink on Velin paper. 48,8 x 63 cm. Musée Municipal d'Art Moderne, Céret. (Inv. MAMC.1991.0286). Don du Parti Communiste au musée de Céret; Don de l'artiste à la section su Parti Communiste de Céret.

OPP.53:266; CE.04*:81; PA.20j:94p; PE.17*:39p





Portrait de Max Jacob (Max Jacob, Chronique des temps héroïques). Vallauris. 23-September/1953. Lithograph on B F K Rives, edition 93. [23,5 x 16,5] 23 x 17,5 cm. Musée Picasso, Paris. (Inv BIB1435-1). Also Christie's. #208, 8964, 12/01/00.

OPP.53:017; B.I:743; GC:78.1; M:271; HS.94*:308; JR.91:260p; NM.95:154p

Picador. Vallauris. 25-September/1953. Round plate with a patinated center, edition 200. [22,5] 23,7 cm. Christie's. #154, 5440, 05/24/06.

OPP.53:015; AR:200.I; B.III:44; GR.74:97





Corrida sur fond noir. Vallauris. 25-September/1953. Glazed white ceramic platter, painted in black & in colors, edition 500. [31,1 x 38,2] 31,5 x 39 cm. Christie's. #427, 9065, 04/06/01.

OPP.53:022; AR:198

Picador et taureau. Vallauris. 25-September/1953. White earthenware plate, oxidized paraffin decoration, white enamel bath & painted in black, edition 200. 25 cm. Sotheby's. #354, N08123, 10/28/05.

OPP.53:027; AR:194





Picador. Vallauris. 25-September/1953. Painted & partially glazed white earthenware plate, edition 200. 22,5 cm. Sotheby's. #697, W01402, 10/24/01.

OPP.53:030; AR:201.I; BS.08b*:16

Corrida et soleil. Vallauris. 25-September/1953. White earthenware clay platter, glazed, painted in black, blue, green, red & white, edition 100. [30 x 36,5] 30,5 x 37 cm. Sotheby's. #452, N07717, 11/02/01.

OPP.53:037; AR:199; HK.14*:149p





Picador. Vallauris. 25-September/1953. White earthenware plate, decoration in engobes under glaze, painted green, blue, yellow & white, edition 300. 23 cm. Christie's. #207, 1368, 04/28/04.

OPP.53:066; AR:202.I; BS.08b*:17

Picador et taureau. Vallauris. 25-September/1953. Partially glazed plate, edition 200. 23 cm. Christie's. #109, 5008, 04/05/06.

OPP.53:121; AR:197; B.III:45





Picador. Vallauris. 25-September/1953. White earthenware plate, decoration in engobes under glaze. 23 cm. Private collection.

OPP.53:255; AR:202.II

Picador. Vallauris. 25-September/1953. White earthenware plate, decoration in engobes under glaze. 23 cm. Private collection.

OPP.53:256; AR:202.III





Picador et taureau. Vallauris. 25-September/1953. Glazed ceramic plate. 23,6 cm. Christie's. #514, 4232, 06/25-26/12.

OPP.53:261; AR:196

Picador et taureau. Vallauris. 25-September/1953. Partially glazed ceramic plate. 23,9 cm. Christie's. #513, 4232, 06/25-26/12.

OPP.53:262; AR:195; DQ.74:196p





Picador. Vallauris. 25-September/1953. Glazed earthenware plate with patinated centre. 23,9 cm. Christie's. #74, 3022, 11/27/12.

OPP.53:271; AR:201.II

Picador. Vallauris. 25-September/1953. White earthenware plate painted in brown. 23,9 cm. Christie's. #105, 2523, 04/27/11.

OPP.53:272; AR:201.III





Picador et taureau. Vallauris. 25-September/1953. Glazed ceramic plate. 23,5 cm. Sotheby's. #109, PF1414, 11/25/14.

OPP.53:329; AR:200.II

Picador et taureau. Vallauris. 25-September/1953. Glazed ceramic square round plate. 25,1 cm. Sotheby's. #586, L16005, 02/05/16.

OPP.53:348; GE.04*:n/a; TF.00*:12





Picador. Vallauris. 25-September/1953. White earthenware ceramic plate with white glaze & black oxide. 23,8 cm. Christie's. #286, 11133, 02/05/16.

OPP.53:351; AR:200.III

Tauromachie. Vallauris. 25-September/1953. Painted & glazed ceramic; square round plate. 25 x 25 cm. Sotheby's. #134, L20005, 02/19/20. Formerly Marina Picasso Collection.

OPP.53:445





Paysage. Vallauris. 26-September/1953. White earthenware pitcher. 31 cm. Musée Municipal d'Art Moderne, Céret. (Inv MAMC CER 1991.0320).

OPP.53:232; CE.04*:179; GR.74:208; TO.99*:207

Portrait d'Irène Rignault (Pour Irene). Vallauris. 13-October/1953. Colored pencil & pastel on paper. 26,8 x 21,1 cm. Sotheby's. #435, N11402, 05/16/24. Formerly Sotheby's. #242, N11158, 05/17/23.

OPP.53:461; TO.88*:31; WP.78*:14





Tête d'homme. Vallauris. 14-October/1953. White earthenware plate, decoration in engobes, knife engraved under glaze; black, white & red, edition 50. 32 x 39 cm. Museu Picasso, Barcelona. Also Christie's. #522, 5224, 04/04/07.

OPP.53:002; AR:203; MPB:64.674; CR.74:1022; HG.71:177p

Colombe. Vallauris. 14-October/1953. Bronze with dark green patina. 12,7 x 22,2 x 10,8 cm. Private collection. Also Christie's. #644, 9226, 11/10/99.

OPP.53:264; PP.53:069*; WS:474; TO.69*:17





Colombe. Vallauris. 14-October/1953. Terracotta & slip. 15 x 21 x 13 cm. Musée Municipal d'Art Moderne, Céret.

OPP.53:268; CE.04*:178; CP.95:81p; PF.10*:62; TG.94*:128

Femme assise. Paris. 14-October/1953. Bronze with dark brown patina. 22,8 cm. Sotheby's. #253, L23004, 03/02/23. Formerly Christie's. #1206, 12071, 05/13/16.

OPP.53:353; PP.53:069; WS:471.II



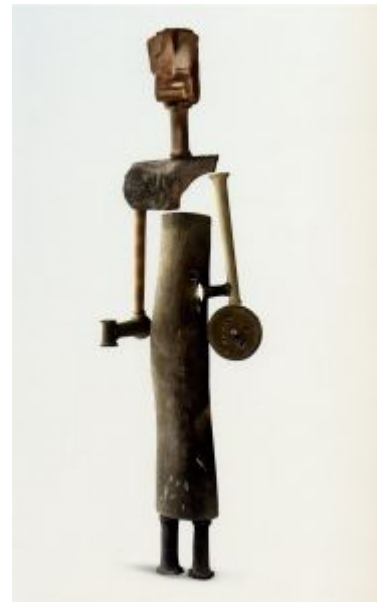


Plat long avec portrait d'une femme. Vallauris. 15-October/1953. Faïence, engraved decoration on black ground. 38 x 22 cm. Museum Ludwig, Köln. (Inv ML 01571). Schenkung 1994.

OPP.53:239; WO.92*:142

La femme à la clé (La Taulière). Vallauris. 21-October/1953. Fired clay (brick fragments & shards of clay pottery) & key. 172 x 43 x 30 cm. Private collection.

OPP.53:313; GB.14*:66; JR.14*:309





Liseuse sur fond noir. Vallauris. [Late-]Fall/1953. Oil on wood. 92 x 73 cm. Galerie GAM. 2005.

OPP.53:169; PP.53:131; Z.XV:260; AB.53:18; MI.53*:175; RO.98a*:n/a



Portrait de Madame X (La Vickysoise). Vallauris. 2-November/1953. Lithograph on Van Gelder. 76,8 x 52,1 cm. Kunstmuseum Picasso, Münster. Also Christie's. #233, 1322, 04/28/03.

OPP.53:047; M:242; MD.02*:307p



La femme au miroir (IV). [Vallauris]. 5-November/1953. Lithograph. 40 x 52 cm. Sotheby's. #113, 20265, 03/10-24/22.

OPP.53:355; M:197.04

Femme en prière (D'après Albrecht Altdorfer). Vallauris. 12-November/1953. Ink on paper (Reproduced in L'Oeil, 1955, no. 5). S/U. Private collection.

OPP.53:357; LW.15:210p





Femme en prière (D'après Albrecht Altdorfer). Vallauris. 18-November/1953. Ink on paper (Reproduced in L'Oeil, 1955, no. 5). S/U. Private collection.

OPP.53:358; LW.15:210p

La pique. Vallauris. 24-November/1953. Partially painted & glazed ceramic. 36,2 x 66 cm. Sotheby's. #421, L20008, 07/20-29/20. Formerly Galerie Louise Leiris, Paris.

OPP.53:284; HJ.96:33p





Scène de tauromachie. Vallauris. 25-
November/1953. Partially glazed ceramic bowl.
17,7 cm. Christie's. #7, 3692, 12/01/11.

OPP.53:249; AR:240; CE.04*:260

Scène de tauromachie. Vallauris. 25-
November/1953. Partially glazed terracotta
bowl. 17,5 cm. Christie's. #264, 4232,
06/25-26/12.

OPP.53:260; AR:239





Peintre et modèle. Vallauris. 27-November~14-December/1953. India ink wash & gouache on paper. 24 x 18 cm. Private collection, Switzerland.

OPP.53:021; PP.53:070; Z.XVI:14; KK.93:88; PE.01a*:111

Modèle se déshabillant. Vallauris. 28-November/1953. Ink & wash on paper. 24 x 18 cm. Private collection.

OPP.53:038; PP.53:070a; Z.XVI:15; CK.10:249; HJ.83:41p; HJ.96:41p; KK.93:89





La lecture. Vallauris [Paris]. [December]/1953.
India ink, felt-tip pen & colored-pencil on paper. 27
x 21 cm. Private collection.

OPP.53:163; BA.03a*:387

Tête. Vallauris. 3-December/1953. Pencil on paper. 34
x 27 cm. Musée Picasso, Paris. Jacqueline Roque
Picasso Collection. Dation 1990.

OPP.53:055; MPP:1990.112.17v; PP.53:071;
Z.XVI:8; BL:96.49.17v





Deux têtes. Vallauris. 3-December/1953. Pencil on paper. 34 x 27 cm. Musée Picasso, Paris. Jacqueline Roque Picasso Collection. Dation 1990.

OPP.53:071; MPP:1990.112.18v; PP.53:072; Z.XVI:9

Tête de femme et d'homme. Vallauris. 3-December/1953. Pencil on paper. 34 x 27 cm. Musée Picasso, Paris. Jacqueline Roque Picasso Collection. Dation 1990.

OPP.53:151; MPP:1990.112.22v; PP.53:076; Z.XVI:13



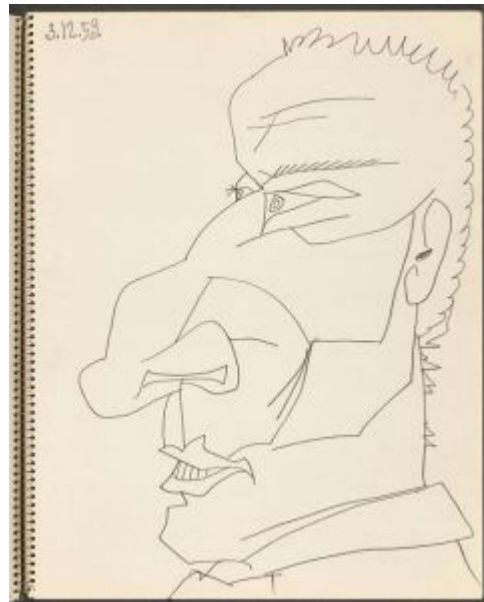


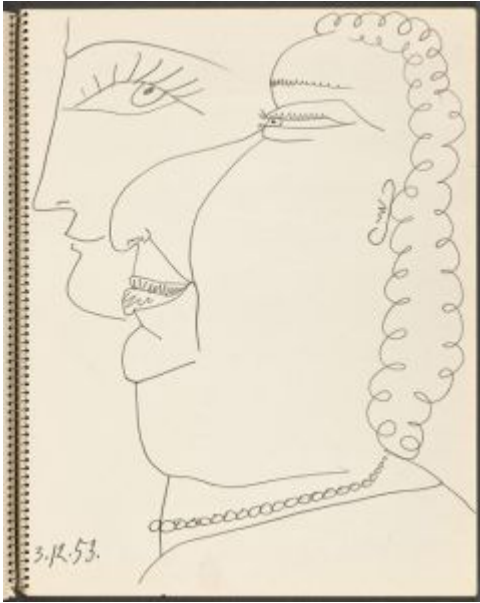
Tête d'homme de profil. Vallauris. 3-December/1953. Pencil on paper. 34 x 27 cm. Musée Picasso, Paris. Jacqueline Roque Picasso Collection. Dation 1990.

OPP.53:160; MPP:1990.112.21v; PP.53:075; Z.XVI:12; BL:96.49.21v

Tête d'homme de profil. Vallauris. 3-December/1953. Pencil on paper. 34 x 27 cm. Musée Picasso, Paris. Jacqueline Roque Picasso Collection. Dation 1990.

OPP.53:161; MPP:1990.112.20v; PP.53:074; Z.XVI:11; BL:96.49.20v





Deux têtes féminines de profil. Vallauris. 3-December/1953. Pencil on paper. 34 x 27 cm. Musée Picasso, Paris. Jacqueline Roque Picasso Collection. Dation 1990.

OPP.53:162; MPP:1990.112.19v; PP.53:073; Z.XVI:10; BL:96.49.19v

Nouvelle année. Vallauris. 3-December/1953. Gouache, ink & crayon. 48,2 x 38,1 cm. Private collection.

OPP.53:276; HK.65:182p



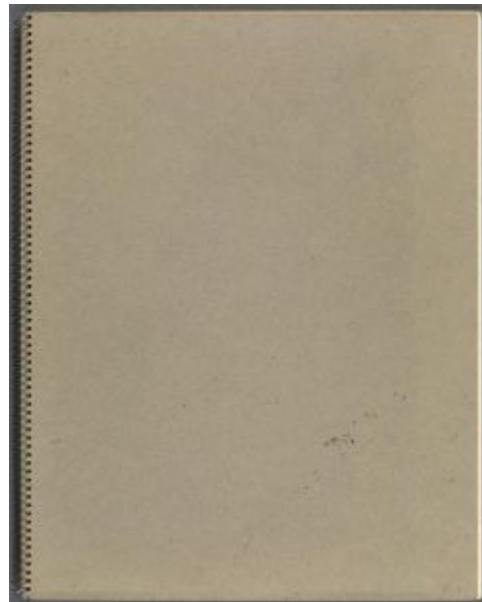


1ere de couverture. Vallauris. 3~4-December/1953.
Cardboard. 27 x 35 cm. Musée Picasso, Paris. Jacqueline
Roque Picasso Collection. Dation 1990.

OPP.53:370; MPP:1990.112.c1; BL:96.49.c1; GR.90*:109

4eme de couverture. Vallauris. 3~4-
December/1953. Pen & India ink on paper. 35 x 27
cm. Musée Picasso, Paris. Jacqueline Roque Picasso
Collection. Dation 1990.

OPP.53:380; MPP:1990.112.c4; BL:96.49.c4





La guerre (Étude). Vallauris. 4-December/1953.
Lead pencil on paper. 66 x 44,5 cm. Musée
Picasso, Paris. Jacqueline Roque Picasso Collection.
Dation 1990.

OPP.53:217; MPP:1990.91; PP.53:092a;
CK.04*:109; GR.90*:88; GU.00:148; LU.93:396;
PA.19d*:302; TO.04:47p

Minotaure au poignard brisé. Vallauris.
4-December/1953. [India ink] Pencil,
graphite on paper. 35 x 27 cm. Musée
Picasso, Paris. Jacqueline Roque Picasso
Collection. Dation 1990.

OPP.53:297; MPP:1990.112.04r;
PP.53:080; Z.XVI:19; BL:96.49.4r;
GR.90*:109; GU.00:109



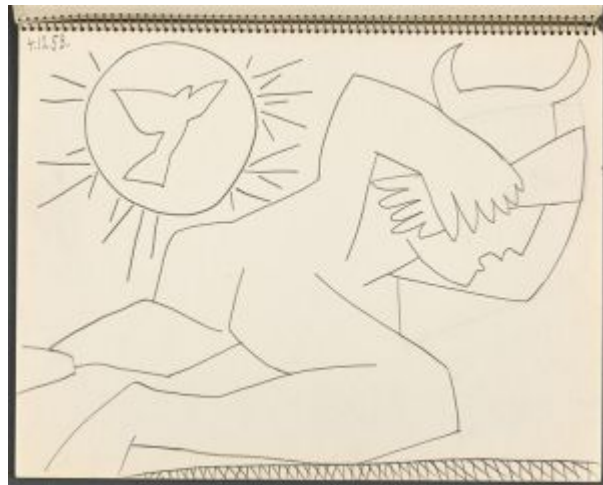


Minotaure au poignard brisé et ange au miroir. Vallauris. 4-December/1953. [India ink] Graphite on paper. 35 x 27 cm. Musée Picasso, Paris. Jacqueline Roque Picasso Collection. Dation 1990.

OPP.53:298; MPP:1990.112.02r; PP.53:078; Z.XVI:17; BL:96.49.2r; GR.90*:109; GU.00:110

Colombe et personnage cachant ses yeux. Vallauris. 4-December/1954. India ink on paper. 27,4 x 34 cm. Musée Picasso, Paris. Jacqueline Roque Picasso Collection. Dation 1990.

OPP.53:301; MPP:1990.112.14r; PP.53:090; Z.XVI:29; AT.84:17; BL:96.49.14r





Colombe et personnage au couteau brisé. Vallauris. 4-December/1953. India ink on paper. 27,4 x 34 cm. Musée Picasso, Paris. Jacqueline Roque Picasso Collection. Dation 1990.

OPP.53:302; MPP:1990.112.13r; PP.53:089; Z.XVI:28; AT.84:52; BL:96.49.13r; LU.93:398

Nu assise (Geneviève Laporte). Vallauris. 4-December/1953. Pencil on paper. 24 x 20 cm. Stolen. Formerly John Richardson Collection.

OPP.53:344; JR.91:4p





Le hibou de la Mort vaincu par le combattant de la Paix. Vallauris. 4-December/1953. Pen & India ink on paper. 35 x 27 cm. Musée Picasso, Paris. Jacqueline Roque Picasso Collection. Dation 1990.

OPP.53:371; MPP:1990.112.01r; PP.53:077;
Z.XVI:16; BL.96:49.1r; GR.90*:109; LU.93:397

Minotaure au poignard brisé et ange au miroir. Vallauris. 4-December/1953. Pen & India ink on paper. 35 x 27 cm. Musée Picasso, Paris. Jacqueline Roque Picasso Collection. Dation 1990.

OPP.53:372; MPP:1990.112.03r;
PP.53:079; Z.XVI:18; BL.96:49.3r;
GR.90*:109





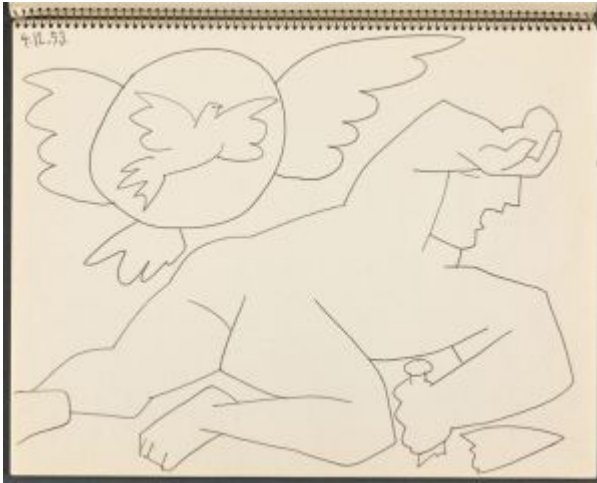
Minotaure au poignard brisé et Colombe de la Paix. Vallauris. 4-December/1953. Pen & India ink on paper. 35 x 27 cm. Musée Picasso, Paris. Jacqueline Roque Picasso Collection. Dation 1990.

OPP.53:381; MPP:1990.112.05r; PP.53:081; Z.XVI:20; BL:96.49.5r; PA.19d*:301

Minotaure au poignard brisé et Colombe de la Paix. Vallauris. 4-December/1953. Pen & India ink on paper. 35 x 27 cm. Musée Picasso, Paris. Jacqueline Roque Picasso Collection. Dation 1990.

OPP.53:382; MPP:1990.112.06r; PP.53:082; Z.XVI:21; BL:96.49.6r



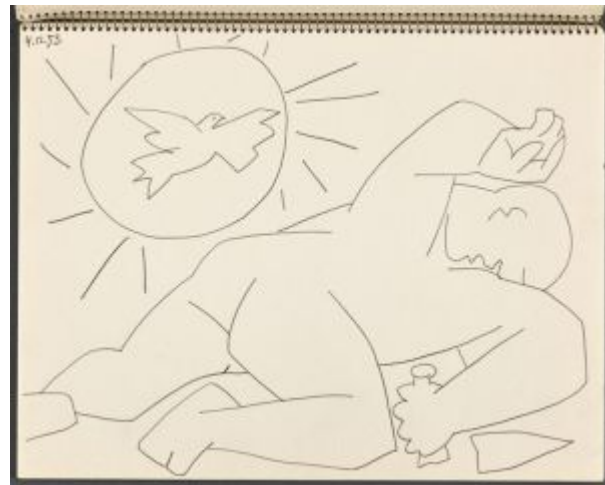


Personnage au poignard brisé et Colombe de la Paix. Vallauris. 4-December/1953. Pen & India ink on paper. 35 x 27 cm. Musée Picasso, Paris. Jacqueline Roque Picasso Collection. Dation 1990.

OPP.53:383; MPP:1990.112.07r; PP.53:083; Z.XVI:22; BL:96.49.7r

Personnage au poignard brisé et Colombe de la Paix. Vallauris. 4-December/1953. Pen & India ink on paper. 35 x 27 cm. Musée Picasso, Paris. Jacqueline Roque Picasso Collection. Dation 1990.

OPP.53:384; MPP:1990.112.08r; PP.53:084; Z.XVI:23; BL:96.49.8r



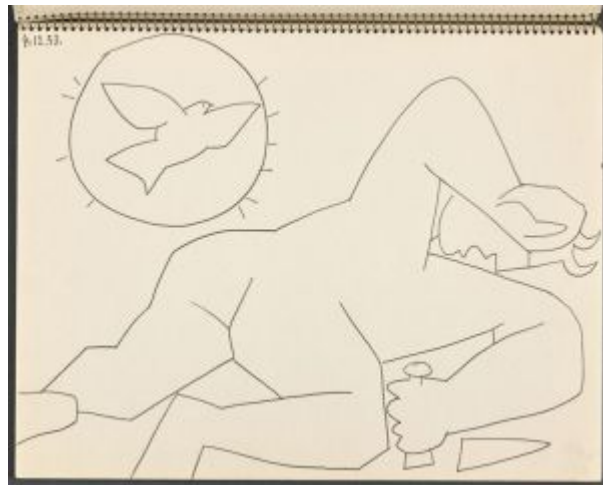


Minotaure au poignard brisé et Colombe de la Paix. Vallauris. 4-December/1953. Pen & India ink on paper. 35 x 27 cm. Musée Picasso, Paris. Jacqueline Roque Picasso Collection. Dation 1990.

OPP.53:385; MPP:1990.112.09r; PP.53:085; Z.XVI:24; BL:96.49.9r

Minotaure au poignard brisé et Colombe de la Paix. Vallauris. 4-December/1953. Pen & India ink on paper. 35 x 27 cm. Musée Picasso, Paris. Jacqueline Roque Picasso Collection. Dation 1990.

OPP.53:386; MPP:1990.112.10r; PP.53:086; Z.XVI:25; BL:96.49.10r





Personnage vaincu par la colombe de la Paix.
Vallauris. 4-December/1953. Pen & India ink on paper. 35 x 27 cm. Musée Picasso, Paris.
Jacqueline Roque Picasso Collection. Dation 1990.

OPP.53:387; MPP:1990.112.11r; PP.53:087;
Z.XVI:26; BL:96.49.11r

Personnage vaincu dissimulant son visage. Vallauris. 4-December/1953. Pen & India ink on paper. 35 x 27 cm. Musée Picasso, Paris. Jacqueline Roque Picasso Collection. Dation 1990.

OPP.53:388; MPP:1990.112.12r;
PP.53:088; Z.XVI:27; BL:96.49.12r



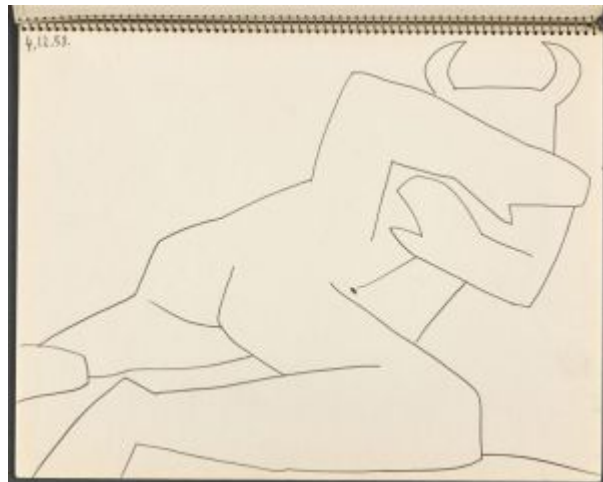


Minotaure vaincu par la colombe de la Paix.
Vallauris. 4-December/1953. Pen & India ink on paper. 35 x 27 cm. Musée Picasso, Paris.
Jacqueline Roque Picasso Collection. Dation 1990.

OPP.53:389; MPP:1990.112.15r; PP.53:091;
Z.XVI:30; BL:96.49.15r

Minotaure vaincu dissimulant son visage. Vallauris. 4-December/1953. Pen & India ink on paper. 35 x 27 cm. Musée Picasso, Paris. Jacqueline Roque Picasso Collection. Dation 1990.

OPP.53:390; MPP:1990.112.16r;
PP.53:092; Z.XVI:31; BL:96.49.16r



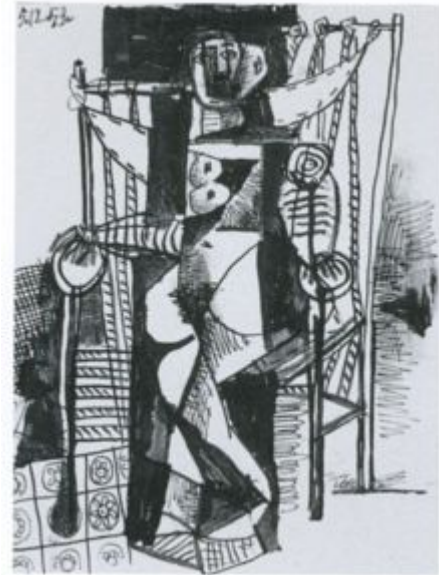


Vase aux trois masques. Cannes. 5-December/1953. Hand-glazed ceramic vase. 25 cm. Sotheby's. #502, N08241, 11/08/06.

OPP.53:170; GR.74:162

Femme nue assise. Vallauris. 5-December/1953. India ink on paper. 23,5 x 18 cm. Private collection.

OPP.53:320; GB.14:165p





Lettre manuscrite à Max Pellequer. Vallauris. 5-December/1953. Red pencil. S/U. Piasa. #44, 2142, 02/15/24. Formerly Max Pellequer Collection.

OPP.53:472

Femme assise. Vallauris. 6-December/1953. Pen, India ink, brush & gray wash on paper. [65,5 x 50,4] 65 x 49 cm. Christie's. #8C, 3736, 05/14/15. Formerly Christie's. #44, 1429, 11/03/04; Dr. Paul Sternberg Trusts, Chicago.

OPP.53:075; PP.53:095*; CH.68a*:97; CH.73b*:n/a; FR.65a*:110; GT.81*:n/a; LO.54a*:23; MJ.59:132





Femme assise aux mains croisées. Vallauris. 6-December/1953. Pen & ink wash. 70 x 50,5 cm. Mr. and Mrs. Paul Kantor Collection, Beverly Hills, CA.

OPP.53:247; PP.53:095; Z.XVI:35; DK.61*:102; JR.62*:8.42; WC.62*:52

La ronde. Vallauris. 6-December/1953. Pen on paper. 44,5 x 50,5 cm. Private collection.

OPP.53:310; PP.53:093; Z.XVI:32





Nu assis. Vallauris. 6-December/1953. Pen & ink wash on paper. 50,6 x 65,6 cm. Private collection.

OPP.53:418; PP.53:094; Z.XVI:33



Femme assise. Vallauris. 7-December/1953. Pen & ink wash on paper. 65,5 x 50,5 cm. Private collection.

OPP.53:419; PP.53:096; Z.XVI:34



Le cheval de picador cabré. Vallauris. 7-December/1953. Pen & ink & wash on paper. 50,5 x 65 cm. Stephen Ongpin Fine Art. Formerly Christie's. #142, 17192, 06/19/19.

OPP.53:432; PP.53:096a; LO.54a*:21

Visage gris. Vallauris. 8-December/1953. White earthenware platter, partially glazed, painted in black, white & green, edition 500. 32 x 39 [38,7] cm. Sotheby's. #453, N07717, 11/02/01.

OPP.53:036; AR:206.I





Paysage. Vallauris. 8-December/1953. White earthenware clay round dish, decoration in engobes, knife engraved, under glaze, painted blue, green, black, white & yellow, edition 100. 42 cm. Sotheby's. #270, W05711, 10/26/05.

OPP.53:099; AR:205

Paysage. Vallauris. 8-December/1953. Glazed ceramic plate, edition 200. 29 cm. Christie's. #73, 5846, 04/29/09.

OPP.53:209; AR:204





Paysage de Vallauris la nuit. Vallauris. 8-December/1953. White terracotta, painted with slips & enamel & incised under partial glaze, edition 200. 32 x 38 x 4,5 cm. Private collection.

OPP.53:293; JR.10*:160p

Visage gris. Vallauris. 8-December/1953. Partially glazed & engraved ceramic plate. 38,8 cm. Christie's. #56, 5377, 06/26/14.

OPP.53:322; AR:206.II





Paysage. Vallauris. 9-December/1953. Partially glazed ceramic plate, edition 200. 41,9 cm. Christie's. #438, 9065, 04/06/01.

OPP.53:020; AR:208; GR.74:733; TO.99*:208

Femme assise dans un fauteuil tressé, en gris (La Vickysoise) (Françoise). Vallauris. 11-December/1953. Oil on canvas. 116,2 x 88,9 cm. Christie's. #43, 21609, 02/28/23. Formerly Sotheby's. #44, N07838, 11/05/02.

OPP.53:048





Portrait de femme (La Vickysoise). Vallauris. 11-December/1953. Ink, gouache & pencil. [66 x 50] 65,5 x 50,5 cm. Private collection.

OPP.53:233; PP.53:097a; Z.XVI:53; GL.81*:38

Devant le jardin (Paloma). Vallauris. [28] 12-December/1953 [1954]. Oil on canvas. [150,4 x 98,4] [150,5 x 98,5] 130,8 x 97,5 cm. Helly Nahmad Collection, Monaco/London. Formerly Sotheby's. #233, NY7648, 05/10/01; Sotheby's. #61, 11/13/90; Mr. & Mrs. David E. Bright Collection.

OPP.53:025; PP.53:157; Z.XVI:97; DK.61*:41; DK.61*:41; GR.90:64p; HK.65:155p; HN.13*:197p; LO.98b*:n/a; RR.09*:63; RT.99*:61; SR.60a*:n/a; TO.64*:256; TO.99*:103; WR.96:441p; WS.94:105p; WS.95a:48; WS.95a:48p; WW.91:509p





La chatte et le coq. Vallauris. 13-December/1953. Oil on canvas. 88,5 x 116 cm. Musée National d'Art Moderne, Centre Georges Pompidou, Paris. (Inv AM.1984.635). Donation Louise et Michel Leiris, 1984.

OPP.53:067; PP.53:099; Z.XVI:55; AU.89*:50; BA.22:51p; CG.12*:95; CP.95:106p; DU.95*:97p; GP.96:320p; JB.92*:137; KG.71:33; KG.85:33; ND.01*:35; PA.84d*:153; RM.07*:65p; TO.04*:118; UW.84*:26

Coq mort et pot. Vallauris. 13-December/1953. Oil on canvas. 89,5 x 116 cm. Bergen Kunstmuseum, Norway. (Inv SS.M.38). Stenersen Collection.

OPP.53:193; PP.53:098; Z.XVI:54; AK.77*:68; CG.12*:94; CP.95:84p; GP.96:318p; JB.92*:138; PF.10*:32; RM.07*:64p; TO.04*:119





Chat dévorant un coq. Vallauris. 14-December/1953. Oil on canvas. 89 x 116 cm. Museo Picasso, Málaga. On temporary loan from Fundación Almine & Bernard Ruiz-Picasso para el Arte.

OPP.53:378; PP.53:099a; Z.XVI:59; DD.61:245p; MG.04b*:103; NC.17*:129

Chat à l'oiseau I. Vallauris. 15-December/1953. Conté crayon. 21 x 27 cm. Private collection.

OPP.53:084; PP.53:100; Z.XVI:36





Chat à l'oiseau II. Vallauris. 15-December/1953.
Conté crayon. 21 x 27 cm. Private collection.

OPP.53:123; PP.53:101; Z.XVI:37

Chat à l'oiseau III. Vallauris. 15-
December/1953. Conté crayon. 21 x 27
cm. Private collection.

OPP.53:124; PP.53:102; Z.XVI:38





Chat à l'oiseau IV. Vallauris. 15-December/1953.
Conté crayon. 21 x 27 cm. Private collection.

OPP.53:125; PP.53:103; Z.XVI:39

Chat à l'oiseau V. Vallauris. 15-
December/1953. Conté crayon. 21 x 27
cm. Private collection.

OPP.53:126; PP.53:104; Z.XVI:40





Chat à l'oiseau VI. Vallauris. 15-December/1953.
Conté crayon. 21 x 27 cm. Private collection.

OPP.53:127; PP.53:105; Z.XVI:41

Chat à l'oiseau VII. Vallauris. 15-December/1953. Conté crayon. 21 x 27 cm. Private collection.

OPP.53:128; PP.53:106; Z.XVI:42





Chat à l'oiseau VIII. Vallauris. 15-December/1953. Conté crayon. 21 x 27 cm. Private collection.

OPP.53:129; PP.53:107; Z.XVI:43

Chat à l'oiseau IX. Vallauris. 15-December/1953. Conté crayon. 21 x 27 cm. Private collection.

OPP.53:130; PP.53:108; Z.XVI:44; JL.71:269p



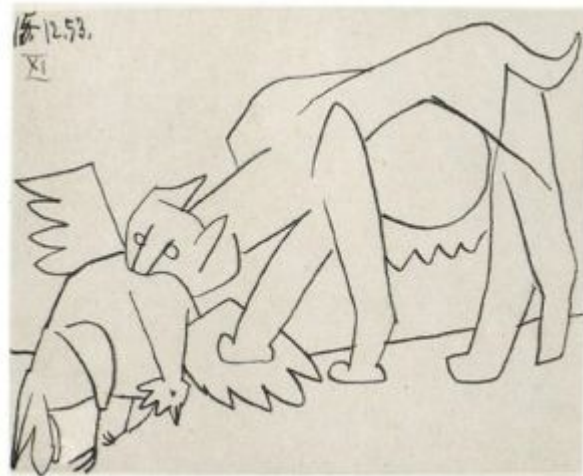


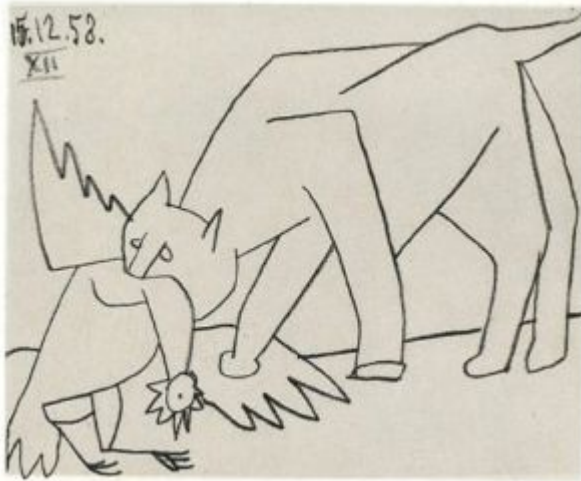
Chat à l'oiseau X. Vallauris. 15-December/1953.
Conté crayon. 21 x 27 cm. Private collection.

OPP.53:131; PP.53:109; Z.XVI:45; JL.71:269p

Chat à l'oiseau XI. Vallauris. 15-
December/1953. Conté crayon. 21 x 27
cm. Private collection.

OPP.53:132; PP.53:110; Z.XVI:46





Chat à l'oiseau XII. Vallauris. 15-December/1953. Conté crayon. 21 x 27 cm. Private collection.

OPP.53:133; PP.53:111; Z.XVI:47



Chat à l'oiseau XIII. Vallauris. 15-December/1953. Conté crayon. 21 x 27 cm. Private collection.

OPP.53:134; PP.53:112; Z.XVI:48



Chat à l'oiseau XIV. Vallauris. 15-December/1953. Conté crayon. 21 x 27 cm. Private collection.

OPP.53:135; PP.53:113; Z.XVI:49

Chat à l'oiseau XV. Vallauris. 15-December/1953. Conté crayon. 21 x 27 cm. Private collection.

OPP.53:136; PP.53:114; Z.XVI:50





Chat à l'oiseau. Vallauris. 15-December/1953.
India ink. 21 x 27 cm. Private collection.

OPP.53:137; PP.53:115; Z.XVI:51

Chat dévorant un coq. Vallauris. 15-December/1953. Violet felt-tip pen & India ink. 18,1 x 24 cm. Musée Picasso, Paris. Dation 1979.

OPP.53:216; MPP:1414; PP.53:116a;
AB.12*:231p; UW.84:27a





Chat mangeant un poisson. Vallauris. 15-December/1953. Oil on canvas [OIC]. 19 x 24 cm. The Picasso Estate. (Inv 13265).

OPP.53:308; CP.95:105p

Chat à l'oiseau. Vallauris. 15-December/1953. India ink on paper. 21 x 27 cm. Private collection.

OPP.53:420; PP.53:116; Z.XVI:52





Deux personnages. Vallauris. 16-December/1953. Brush & India ink on paper. [21 x 26,5] 20,9 x 26,4 cm. Christie's. #8, 19578, 05/29-06/11/20. Formerly Sotheby's. #326, N09416, 11/06/15; Mr. and Mrs. James J. Bigoni Collection.

OPP.53:043; PP.53:120; Z.XVI:56; CC.01*:38p; DK.61*:101

Têtes. Vallauris. 16-December/1953. Pen, brush & India ink on paper. [26,5] 26,7 x 21 cm. Private collection. Formerly Christie's. #361, 9354, 05/09/00; Private collection, Riehen, Switzerland.

OPP.53:187; PP.53:119; Z.XVI:63; AH.13*:129; BA.03a*:328; LB.58:121p





Homme et femme nus. Vallauris. 16-December/1953. Brush & India ink on paper. 26,5 x 21 cm. Private collection, Riehen, Switzerland.

OPP.53:188; PP.53:118; Z.XVI:62; AH.13*:128;
BA.03a*:329; KK.93:90

Deux personnages. Cannes. 16-December/1953. Pen, ink & ink wash on paper. 20,9 x 26,4 cm. Sotheby's. #N/A, L23007, 06/28/23. Formerly Sotheby's. #217, L08006, 02/06/08.

OPP.53:198; PP.53:121; Z.XVI:57;
DA.72:125p; HN.86*:n/a





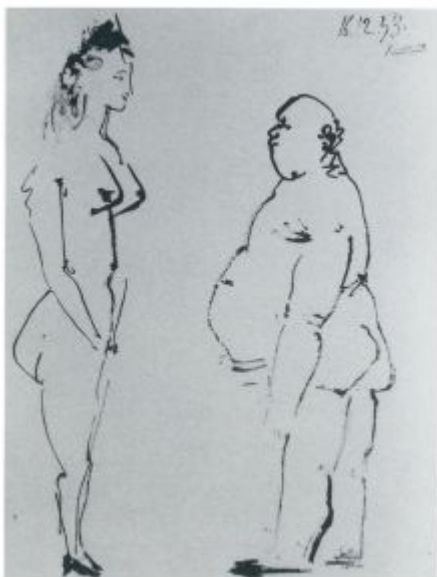
La paix III (Étude). Vallauris. 16-December/1953. India ink on paper. 50,5 x 66 [65,5] cm. Musée Picasso, Paris. Dation 1979.

OPP.53:215; MPP:1415; PP.53:116b;
CK.04*:110; GL.81*:37; GU.00:149; LU.93:389;
TO.04:47p; WS.93*:99

Femme nue renversée sur un lit.
Vallauris. 16-December/1953. India ink on
paper. 20,7 x 26,5 cm. Marina Picasso
Collection.

OPP.53:223





Homme nu et femme. Vallauris. 16-December/1953. Ink on paper. S/U. Private collection.

OPP.53:323; PP.53:117; KK.93:91

La paix IV. Vallauris. 16-December/1953.
India ink on paper. 50,6 x 65,5 cm.
Christie's. #114, 4038, 10/22-23/15.
Formerly Bonhams. #4, 22299, 02/03/15.

OPP.53:330; GE.63a*:31; MJ.59:134





La paix. Vallauris. 16-December/1953. India ink on paper. 50,6 x 65,6 cm. Private collection.

OPP.53:468; PP.53:116c

Le coq et la chatte. Vallauris. 17-December/1953. Oil on canvas. 130 x 97 cm. Sprengel Museum, Hannover. Erworben mit Unterstützung von Bernhard Sprengel.

OPP.53:311; PP.53:122; Z.XVI:58; MS.24*:18; WS.93*:105





Petite assiette ovale (Palette avec petits visages). Vallauris. 17-December/1953. Crayon on ceramic; small oval plate. 18 x 22 cm. Sotheby's. #16, L20010, 06/18/20. Formerly Marina Picasso Collection.

OPP.53:447

Femme et pantin. Vallauris. 18-December/1953. Pen, brush & black ink on paper laid down on card. 34,6 x 26,4 cm. Private collection. Formerly Christie's. #870, 6171, 07/01/99; Private collection, Riehen, Switzerland.

OPP.53:189; PP.53:125; Z.XVI:66; AH.13*:132; BA.03a*:331; KK.93:93





Femme et magot. Vallauris. 18-December/1953. Brush & India ink on paper. 35 x 26,5 cm. Private collection, Riehen, Switzerland.

OPP.53:190; PP.53:126; Z.XVI:67; AH.13*:130; BA.03a*:332; BS.55:319p; JL.71:155p; KK.93:92; PD.69:56p

Femme et nain. Vallauris. 18-December/1953. Brush & India ink on paper. 34,7 x 26,6 cm. Sotheby's. #319, L12007, 06/20/12. Formerly Farsetti Arte. #765, 156, 05/28/11.

OPP.53:259; PP.53:124; Z.XVI:65; AH.13*:131; PZ.01*:n/a





Homme et femme nus. Vallauris. 18-December/1953. India ink on paper. 35 x 26,5 cm. Private collection.

OPP.53:421; PP.53:123; Z.XVI:64

Femme et nain. Vallauris. 18-December/1953. India ink on paper. 35 x 26,5 cm. Private collection. Formerly Sotheby's #208, 05/10/89.

OPP.53:422; PP.53:127; Z.XVI:68





Homme et femme nus. Vallauris. 18-December/1953. India ink on paper. 35 x 26,5 cm. Private collection.

OPP.53:423; PP.53:128; Z.XVI:69

Homme et femme. Vallauris. 18-December/1953. India ink on paper. 35 x 26,5 cm. Private collection.

OPP.53:424; PP.53:129; Z.XVI:70





Deux peintres. Vallauris. 18-December/1953. India ink on paper. 35 x 26,5 cm. Private collection.

OPP.53:425; PP.53:130; Z.XVI:71

Visage de profil. Vallauris. 19-December/1953. Red earthenware vase, engobe & paraffin decoration, partial brushed glaze, painted black, green & white, edition 150. 25 x 29 cm. Sotheby's. #718, W01402, 10/24/01.

OPP.53:012; AR:209





Intérieur au pot de fleurs. Vallauris. 20-December/1953. Oil on canvas. [130 x 97] 129,5 x 96,5 cm. Christie's. #11, 18339, 02/05/20. Formerly Christie's. #74, 6226, 12/08/99.

OPP.53:253; PP.53:097b; Z.XVI:72; HD.87*:90; JB.92:298p; LO.88d*:n/a



Clown et femme nue. Vallauris. 21-December/1953. Pen, ink & gouache. 35 x 26,5 cm. Private collection. Formerly Sotheby's. #2, 05/11/87.

OPP.53:241; PP.53:132; Z.XVI:77; KG.71:271; KG.85:271; KK.93:94



Colombe de la Paix (Pour André Villers). Vallauris. 21-December/1953. Ink on paper. 28,6 x 22,2 cm. Dallas Auction Gallery. #48, 04/17/13.

OPP.53:299

Femme et grotesques. Vallauris. 23-December/1953. Brush & pen & ink & wash on paper. 35 x 26,4 cm. Galerie Gmurzynska, Zurich. Formerly Sotheby's. #301, L15004, 02/04/15; Sotheby's. #L192, 12/04/91.

OPP.53:138; PP.53:134; Z.XVI:75; CS.15:99p; JB.65:108; JL.71:269p; KK.93:97





Peintre et modèle. Vallauris. 23-December/1953. Pen & India ink on paper. 32 x 24 cm. Museum Ludwig, Köln. (Inv ML/Z 1994/047). Schenkung 1994. Formerly Galerie Beyeler, Basel.

OPP.53:238; PP.53:133; Z.XVI:74; KK.93:96; WO.92*:65

Dans l'atelier. Vallauris. 23~25-December/1953. India ink. 35 x 26,5 cm. E and R Cyzer 20th Century Art.

OPP.53:139; PP.53:135; Z.XVI:88





Vase noir au visage gravé. Vallauris. 24-December/1953. White earthenware, decoration in engobes, boring, rod engraved, painted black, edition 100. [36,8] 35,5 x 20,5 cm. Christie's. #144, 6683, 10/09/02.

OPP.53:044; AR:210; CE.04*:254; IG.89*:n/a

Peintre et modèle. Vallauris. 24-December/1953. Brush & India ink on paper. 35 x 26,3 cm. Private collection, Riehen, Switzerland. Formerly Sotheby's. #L569, 07/01/87.

OPP.53:140; PP.53:136; Z.XVI:73; AH.13*:133; BA.03a*:333; KK.93:66; TO.14*:74





L'atelier: le peintre et son modèle. Vallauris. 24-December/1953. Brush & India ink on cream wove paper. 35 x 26,8 cm. Morton G. Neumann Family Collection, Chicago.

OPP.53:141; PP.53:137; Z.XVI:76; AB.57*:107p;
CH.68a*:98; GD.77:84p; GT.81*:93; JL.67b:87p; JL.71:155p;
NY.55e*:5; PH.58*:237; WC.62*:55

Dans l'atelier. Vallauris. 24-December/1953. India ink. 26,5 x 21 cm. Private collection.

OPP.53:142; PP.53:138; Z.XVI:85





Peintre et modèle. Vallauris. 24-December/1953. Pen & brush with ink on paper. 26 x 21 cm. Fondation Beyeler, Riehen/Basel. (Inv 57.1).

OPP.53:143; PP.53:139; Z.XVI:78; AH.13*:134; GB.14*:98; GP.96:319p; JB.65:117; NY.21g*:71; PE.01a*:112; RM.07*:111p

Peintre et modèle. Vallauris. 24-December/1953. India ink on paper. 26,5 x 21 cm. Sprengel Museum, Hannover. (Inv I/258). Sprengel Collection.

OPP.53:144; PP.53:140; Z.XVI:79; BA.03a*:335; GB.14*:99; MF.10*:201p; PE.01a*:113





Peintre et modèle. Vallauris. 24-December/1953. Pen & India ink brush on paper. 34,8 x 26,4 cm. Private collection.

OPP.53:145; PP.53:141; Z.XVI:80; AH.13*:135;
BA.03a*:330; TO.14*:76

Dans l'atelier. Vallauris. 24-December/1953. Brush & India ink on paper. 35 x 26,5 cm. Private collection, Riehen, Switzerland. Formerly Sotheby's. #L192, 12/04/91.

OPP.53:146; PP.53:142; Z.XVI:81; AH.13*:136;
BA.03a*:334; TO.14*:75





Peintre et modèle. Vallauris. 24-December/1953. India ink. 26,5 x 21 cm. Private collection.

OPP.53:147; PP.53:143; Z.XVI:82; KA.55*:n/a

Dans l'atelier. Vallauris. 25-December/1953. Pen & India ink on paper. 35 x 26,5 cm. Christie's. #409, 6922, 06/24/04.

OPP.53:070; PP.53:147; Z.XVI:86; AH.13*:137; JB.65:118; LO.55a*:86; TO.14*:77





Dans l'atelier. Vallauris. 25-December/1953. India ink. [35 x 26,5] 35 x 26,1 cm. Sotheby's. #215, L22004, 03/03/22.

OPP.53:148; PP.53:144; Z.XVI:83; JL.71:154p

Peintre et modèle. Vallauris. 25-December/1953. Pen & India ink wash on paper. 26,5 x 21 cm. Galerie Kornfeld und Cie, Bern. #127, 278, 06/16/23.

OPP.53:149; PP.53:145; Z.XVI:84; BB.69*:155; HA.59*:257





Le peintre et son modèle. Vallauris. 25-December/1953. India ink. 26,5 x 21,2 cm. Sotheby's. #311, L18008, 06/20/18. Formerly Sotheby's. #331, N08360, 11/08/07.

OPP.53:150; PP.53:146; Z.XVI:95



Dans l'atelier. Vallauris. 25-December/1953. India ink on paper. 35 x 26,5 cm. Private collection, Switzerland.

OPP.53:152; PP.53:148; Z.XVI:87; BA.03a*:336; HG.72:39; PE.01a*:114



Peintre et modèle. Vallauris. 25-December/1953. India ink on paper. [26,5 x 21] 26,8 x 21,3 cm. The Israel Museum, Jerusalem. (Inv B99.0910). Bequest of Elisabeth Hirsch, California, to American Friends of the Israel Museum.

OPP.53:153; PP.53:149; Z.XVI:89; CN.56*:5; JR.16*:n/a

La lecture. Vallauris. 26-December/1953. India ink. 26,5 x 21 cm. Private collection.

OPP.53:154; PP.53:150; Z.XVI:61





Les poètes. Vallauris. 26-December/1953. Brush & India ink on paper. 26,4 x 21,2 cm. Sotheby's. #216, L08006, 02/06/08.

OPP.53:155; PP.53:151; Z.XVI:90; AH.13*:138

Le vieux poète. Vallauris. 26-December/1953. India ink. 26,5 x 21 cm. Private collection.

OPP.53:156; PP.53:152; Z.XVI:91





La lecture. Vallauris. 26-December/1953. India ink. 26,5 x 21 cm. Private collection.

OPP.53:157; PP.53:153; Z.XVI:92

La lecture. [Cannes] Vallauris. 26-December/1953. Ink wash, pen & ink on paper. [26 x 21,8] 26,4 x 21 cm. Sotheby's. #235, N08588, 11/05/09. Formerly Grace Cohen and Edwin E. Hokin Collection, Chicago.

OPP.53:158; PP.53:154; Z.XVI:93; CH.68a*:100





Dans l'atelier. Vallauris. 26-December/1953. Brush & ink on paper. [26,5 x 21] 26,4 x 21,2 cm. Sotheby's. #131, L16007, 06/22/16.

OPP.53:159; PP.53:155; Z.XVI:94

Le peintre et son modèle. Vallauris. 26-December/1953. India ink & wash. 26,5 x 21 cm. Private collection.

OPP.53:191; BA.03a*:362





Enfant jouant avec un camion (Paloma ou Claude).

Vallauris. 27-December/1953. Oil on canvas. 130 x 96,5 cm.
Musée Picasso, Paris. Jacqueline Roque Picasso Collection. Dation
1990.

OPP.53:004; MPP:1990.25; PP.53:156; Z.XVI:98; BD.16*:80;
DD.61:181p; GR.90*:22; MA.08a*:n/a; PD.09:380p;
PE.17*:127p; RB.99:18p; SP.04*:n/a; UP.00:971; WS.94:104p;
WS.95a*:149; WW.91:509p; YB.99*:221

L'Humanité Dimanche. Vallauris. 27-December/1953.
Newspaper [After *Nouvelle année*]. 60 x 42,5 cm. Gérard
Gosselin Collection. Also Musée Picasso, Paris. 1992. (Inv
515 AP/H/45/86).

OPP.53:265; PP.57:160a; PA.19d*:287; PF.10*:60





L'ombre. Vallauris. 29-December/1953. Oil & charcoal on canvas. 129,5 x 96,5 cm. Musée Picasso, Paris. Dation 1979.

OPP.53:003; MPP:208; PP.53:159; Z.XVI:100; AB.12*:239p; BM.05:181p; DD.61:182p; GP.88*:1; GR.03:15p; JB.96:101; JF.03:9.8; JR.12:160p; JR.21:846p; KG.71:136; KG.85:136; LS.75:65; MA.08a*:n/a; MA.17b:30p; ME.82a*:128; MF.06*:161; MM.02:15p; MN.80*:n/a; MP.02*:182; MP.85:182; PA.04g*:n/a; PA.79a*:334; PB.21:158; PD.09:421p; PE.01a*:14; PE.17*:129p; PJ.14:10p; RB.99:86p; SG.96:6.5; SY.11*:n/a; TG.88*:1; TO.14:73p; UP.00:972; UW.84:125p; VB.99:55p; VO.16:118p; WR.96:159p; WW.91:508p

L'ombre sur la femme. Vallauris. 29-December/1953. Oil on canvas. 130,7 x 97,7 cm. The Israel Museum, Jerusalem. (Inv L.B92.026). The Sam and Ayala Zacks Collection in The Israel Museum, Jerusalem, on permanent loan from the Art Gallery of Ontario.

OPP.53:105; PP.53:158; Z.XVI:99; HA.16*:n/a; JR.09b*:n/a; JR.12*:161p; JR.16*:n/a; LS.75:66; LS.88:18; PB.21:159; SF.57a*:89; TG.88:14; WR.96:160p; WW.91:508p; YP.13*:56





Nu dans l'atelier. Vallauris. 30-December/1953.
Oil on canvas. 89 x 116 [116,2] cm. Private
collection. Formerly Heinz Berggruen Collection.

OPP.53:104; PP.53:160; Z.XVI:96; DW.05:80p;
GP.88*:2; KG.71:138; KG.85:138; MF.10:55p;
PD.09:422p; TG.88*:2; UP.00:984; WW.91:506p

Taureau. Vallauris. 30-December/1953.
Pen & ink on paper. 12,8 x 19,1 cm.
Sotheby's. #85, PF1030, 12/08/10.

OPP.53:228





La chèvre. Vallauris. 30-December/1953. Pen & black ink on paper. 16,2 x 24,8 cm. Private collection. Formerly Christie's. #62, 10/08/92.

OPP.53:469; PP.53:161

La famille de l'artiste. Vallauris. 30-December/1953~1-January/1954. Ink on paper. 32,5 x 50,5 cm. Private collection.

OPP.53:246; PP.53:162; WR.96:442p





Visage de femme. Vallauris. [1948~] 1953. White earthenware rectangular dish, decoration in engobes, knife engraved under glaze, painted blue, green, white & black, edition 400. 39 x 32 cm. Christie's. #135, 6683, 10/09/02.

OPP.53:013; AR:220.I; GB.14*:185

Colombe. Vallauris. 1953. White clay, decorated with slip & incisions. 14,5 x 26,3 x 13 cm. Musée Picasso, Paris. Dation 1979.

OPP.53:089; MPP:3721; OG.99*:n/a; PA.08b*:n/a; PA.19d*:268; PA.79a*:n/a





Vase à la fleur. Vallauris. [1951] 1953. Bronze. 72,5 x 44 x 16 cm. Fundación Almine & Bernard Ruiz-Picasso para el Arte.

OPP.53:167; WS:467.II; JR.10*:167p; MG.03b*:64; MI.01*:151; PA.19e*:93

Colombe. Vallauris. 1953. Glazed white ceramic plate painted in black, blue & white, edition 400. 31 x 37,2 cm. Christie's. #0156, 5468, 05/23/07.

OPP.53:174; AR:218





Fleur des champs. Cannes. 1953. Wax crayon on cut-out paper. 12 x 65 cm. Private collection. Formerly Artcurial. #261, 1331, 10/22/07; Inès and Gérard Sassier Collection.

OPP.53:203

Visage de femme. Cannes. 1953. Carved & painted earthenware plate. 38,1 x 31 x 5,6 cm. Fuller's Fine Art Auctions. 2008.

OPP.53:207; AR:220.II; PH.08*:n/a





Portrait de Mlle D. M. Vallauris. 1953. Offset lithograph, edition 350 [After *Buste de Dora Maar*]. 89,5 x 62 cm. Christie's. #140, L09702, 04/07/09.

OPP.53:208

La petite chouette. Vallauris. 1953. Bronze. 34] 33,6 cm. Heather James Fine Art. Formerly Victoria Ganz Defelice Collection, Irvine, CA.

OPP.53:211; PP.53:001f; WS:476; GL.53*:n/a;
JR.62*:9.20; MF.97:72p; NY.53b*:n/a





Mains au poisson. Vallauris. 1953. Ceramic plate painted & partially glazed terracotta, edition 250. 32 cm. Christie's. #416, 2392, 12/08/09.

OPP.53:213

Mains et poisson. Vallauris. 1953. Red earthenware plate, incised, decoration in black engobes. 5,5 x 32 cm. Musée National de la Céramique, Sèvres. On loan from Musée Picasso, Paris. Jacqueline Roque Picasso Collection. Dation 1990.

OPP.53:224; MPP:1990.369; GR.90*:150



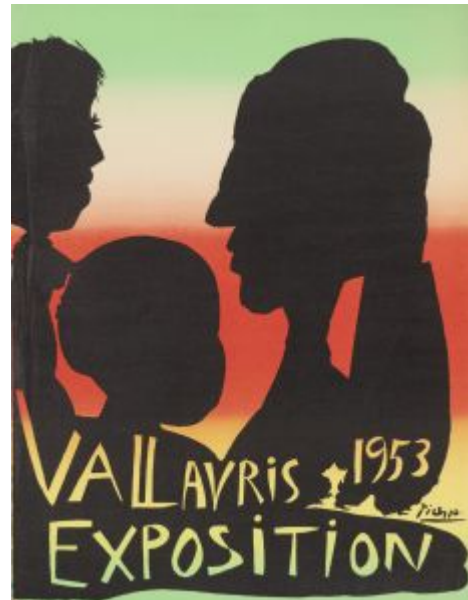


Pichet petites têtes. Vallauris. 1953. Partially glazed ceramic pitcher. 12,5 cm. Christie's. #248, 5063, 02/11/11.

OPP.53:235; AR:222

Vallauris Exposition 1953. Vallauris. 1953. Linoleum with lithograph cut in colors. 66,6 x 51,5 cm. The Museum of Modern Art, NYC. (Inv 201.1965). Gift of Homer Kripke.

OPP.53:236; CC:68; MG.00:7; PA.21g*:279p





Tête de femme. Paris. 1953. Oil on canvas [OïC]. 35,3 x 24,1 cm.
Mr. and Mrs. Eugene V. Klein Collection.

OPP.53:248; DK.61*:40

Mains au poisson. Vallauris. 1953. Fully glazed ceramic plate [Variant of *Femme nue renversée sur un lit*]. 32,3 cm.
Christie's. #100, 3692, 12/01/11.

OPP.53:250





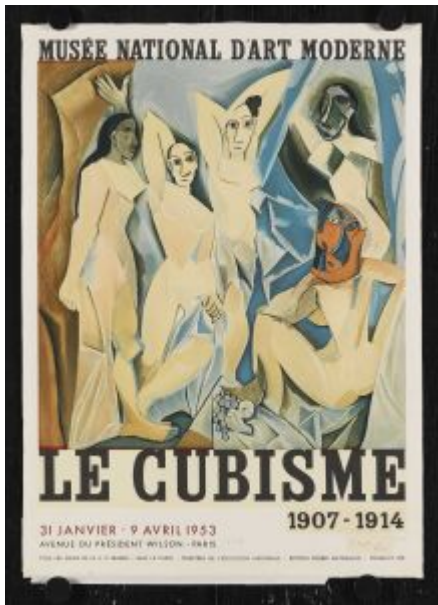
Buste de femme. Vallauris. 1953. Bronze. [27,5 x 16 x 18,4]
26,7 x 15,2 x 18,4 cm. Julie and Edward J. Minskoff Collection.

OPP.53:252; WS:469; MI.01*:158

Oiseau sortant d'un oeuf. Vallauris. [1953]. Earthenware.
43 x 33 x 25,5 cm. Mr. and Mrs. Rafael López Cambil
Collection, NY.

OPP.53:263; TG.94*:126





Le Cubisme. Cannes. 1953. Lithograph in colors. 71,2 x 51,5 cm. Ketterer Kunst. 2013.

OPP.53:270; CC:81

Corrida. Vallauris. 1953. Ceramic plate. 28 x 66 x 5 cm. Museum Würth, Künzelsau. (Inv 3596).

OPP.53:273; RD.08*:108-109p





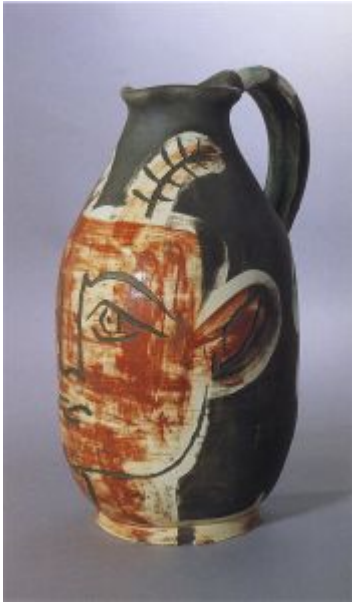
Colombe. Vallauris. 1953. White clay. 15 x 26 cm.
Museum Würth, Künzelsau. (Inv 2214).

OPP.53:274; RD.08*:113p

Françoise. [Vallauris]. 1953. Coloe pencil on paper. 10 x 6 cm.
Private collection.

OPP.53:275; RD.08*:114p





Pichet au faune. Vallauris. 1953. White earthenware, decoration in engobes. 23,2 x 25 cm. Musée des Beaux-Arts, Nice.

OPP.53:281; CE.04*:181; JM.07*:64

Femme peignant. [Vallauris]. 1953. Pencil on paper. 27 x 21 cm. Private collection.

OPP.53:285; JR.12*:148p



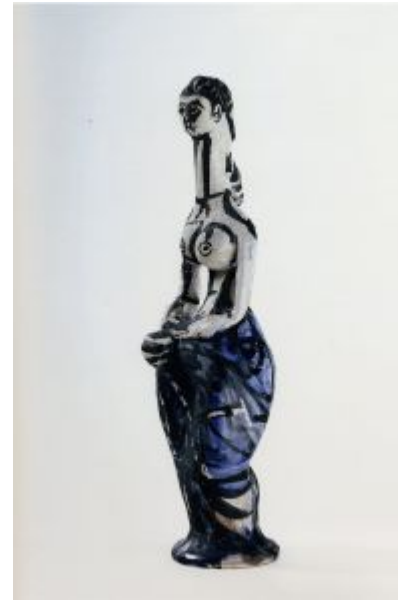


Tanagra noire et bleue. Vallauris. 1953. White terracotta, modeled (elements applied), painted with white, blue, black & maroon oxides & black slips, partially underglaze on the base. 66,5 x 20 x 21 cm. Private collection.

OPP.53:288; JR.12*:293p

Tanagra aux mains jointes. Vallauris. 1953. White terracotta, modeled (elements applied), painted with white & blue oxides & black slips, partially underglaze. 29 x 7 x 7 cm. Private collection.

OPP.53:289; JR.12*:299p





Femme debout sur socle. Vallauris. 1953. Metal, plaster & painted wood. 91 x 22 x 13 cm. Private collection.

OPP.53:294; PP.53:069d; WS:479; JR.10*:169p

Pêcheur à la ligne. Vallauris. 1953. Terracotta, painted with black enamel on a white background. 19 x 19 x 2,5 cm. Private collection.

OPP.53:295; JR.10*:238p





Picador et taureau. Vallauris. 1953. White earthenware plate, white enamel bath & painted in black [Variant of *Picador et taureau*]. 25,2 cm. Sotheby's. #172, L13161, 09/17/13.

OPP.53:304; AR:194.II

Tête de femme. Vallauris. 1953. White earthenware plate. 24 cm. Private collection.

OPP.53:307; HN.13:187p





Mains au poisson. Vallauris. 1953. Terracotta plate. 31,8 cm. Sotheby's. #255, N09647, 10/23-24/17.

OPP.53:321; AR:216.II; B.III:42; GB.14*:187

Le hibou gris. Vallauris. 1953. Painted earthenware. 34 x 25 x 31,5 cm. Museum Boijmans van Beuningen, Rotterdam. (Inv A 3233.KN&V). Purchase 1956.

OPP.53:332





Le hibou. Vallauris. 1953. Glazed earthenware. 34,2 x 35,5 x 15,7 cm. Milwaukee Art Museum. (Inv M1982.43). Gift of the Bradley Family Foundation.

OPP.53:333

Nature morte à l'aubergine. Paris. 1953. Lithograph in colors on Arches, edition 100 [After *Nature morte à l'aubergine*]. 36,8 x 48,1 cm. Sotheby's. #293, N08021, 10/29/04.

OPP.53:335; CC:74





Chouette sous les étoiles. Vallauris. 1953. Painted, partially glazed and incised ceramic; round plate. 28,5 cm. Sotheby's. #115, L15007, 06/25/15.

OPP.53:336

Sirène. Vallauris. 1953. Painted ceramic; askos jug. 20,5 cm. Sotheby's. #130, L15007, 06/25/15.

OPP.53:337; KU.99*:94; TF.00*:21;
TK.86*:CM-6





Abstraction. Vallauris. 1953. Ceramic; manipulated vase. 18,8 cm. Sotheby's. #138, L15007, 06/25/15.

OPP.53:338

Tauromachie. Vallauris. 1953. Painted & partially glazed ceramic; square round plate. 25 cm. Sotheby's. #165, L15007, 06/25/15.

OPP.53:339





Pichet à décor géométrique. Vallauris. 1953. Painted & incised ceramic askos jug. 25,3 cm. Sotheby's. #503, L16005, 02/05/16.

OPP.53:346; KU.99*:95; TF.00*:22

Trois visages. Vallauris. 1953. Painted & glazed ceramic narrow necked vase. 33,6 cm. Pieter and Olga Dreesmann Collection, London. (Inv A023). Formerly .Sotheby's. #504, L16005, 02/05/16.

OPP.53:347; GE.04*:n/a; KU.99*:93





Oiseaux. Vallauris. 1953. Painted & partially glazed ceramic jug. 13,3 cm. Sotheby's. #676, L16005, 02/05/16. Formerly Marina Picasso Collection.

OPP.53:349

Nature morte aux poissons et rondelle de citron. Vallauris. 1953. White terracotta, modeled (elements applied), painted with oxides. 23 cm. Private collection.

OPP.53:360; CE.04*:184





Ronde de danseuses. Vallauris. 1953. Cut-out paper & crayon. S/U. Private collection.

OPP.53:361; CE.04:50

Plat aux poissons. Vallauris. 1953. White terracotta plate painted in oxides & engobes. 32 cm. Musée Municipal d'Art Moderne, Céret. (Inv MAMC 1991.0321).

OPP.53:362; CE.04*:180





Nature morte à la côtelette. Vallauris. 1953.
White terracotta plate (with elements modeled & applied), painted in oxides. 22 cm. Private collection.

OPP.53:364; CE.04*:183

Scène tauromachique. Vallauris. [1953].
Painted & glazed ceramic; plat long with crimped edges. 38,1 cm. Sotheby's. #23, N09727, 05/18/17. Formerly Marina Picasso Collection.

OPP.53:374





Mostra di Picasso Guernica. Vallauris. 1953. Offset lithograph printed in colors. 140,5 x 200 & 38 x 49,5 cm. Musée Picasso, Paris. (Inv AFF26). Also Sotheby's. #231, N09647, 10/23-24/17.

OPP.53:377

Lettre de François José Bernard âgé de 9,5 ans avec une note manuscrite de Picasso. Vallauris. 1953. Paper. S/U. Musée Picasso, Paris. (Inv APCS2002).

OPP.53:379





La chouette en colère. Vallauris. 1953. Painted & partially glazed ceramic. 29,5 cm. Sotheby's. #101, N10459, 10/28/20. Also Sotheby's. #1, N09862, 05/16/18.

OPP.53:402; WS:404.III; GR.80:157; JR.62*:n/a; RP.67b*:66p; RP.67c*:141p

Colombe. Vallauris. 1953. White terracotta modeled & painted in engobes. 19 x 30 x 9 cm. Private collection.

OPP.53:410; LE.21*:264



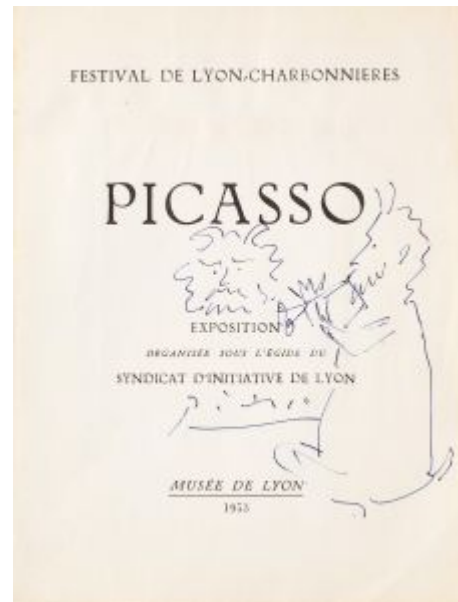


Centaure. Vallauris. 1953. Painted terracotta. 19,4 cm. Christie's. #415, 15979, 11/12/18.

OPP.53:427

Faune, joueur de flûte. Vallauris. 1953. Blue ink on first page of Musée de Lyon exhibition catalog. 24,4 x 18,4 cm. Bonhams. #46, 25483, 11/12/19. Formerly Galerie B. Weil Ltd., London. 2019.

OPP.53:430





Nature morte aux trois poissons. Vallauris. 1953. White terracotta (with molded & applied elements), painted with blue, green, white & brown glaze, on green engobe. 23 cm. Private collection.

OPP.53:431; BA.18*:255p

Portrait d'Henri Martin (Hélène Parmelin, Matricule 2078: l'affaire Henri Martin). Paris. 1953. Print on paper [After *Portrait de Henri Martin*]. 18,3 x 23 cm. Musée de l'Armée, Paris. (Inv C 739).

OPP.53:434; PA.19d*:227





Scène de tauromachique. Vallauris. [1953].
Painted & glazed ceramic; plat long with crimped
edges. 38,1 cm. Sotheby's. #317, N10148,
11/13/19. Formerly Marina Picasso Collection.

OPP.53:441

Décor stylisé à pastilles. Vallauris. [1953].
Painted & partially glazed ceramic; pitcher. 22,9
cm. Sotheby's. #25, N10249, 11/26/19.
Formerly Marina Picasso Collection.

OPP.53:443





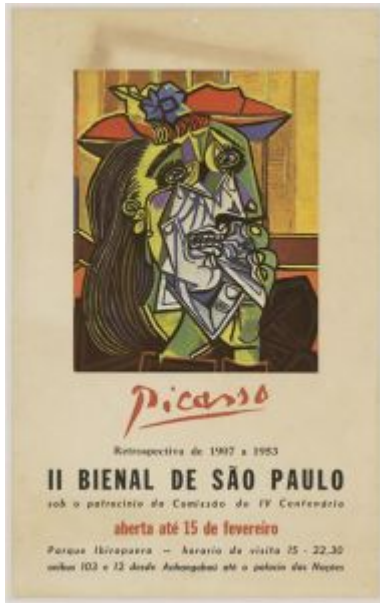
Le pigeon ebouriffe. Vallauris. 1953. Clay. 20 x 21 cm. Museum Ludwig, Köln. (Inv ML 76/SK 0146). Überweisung Wallraf-Richartz-Museum 1976.

OPP.53:446

Décor de main. Vallauris. 1953. Painted & glazed earthenware; plaque ronde. 30 x 29,5 cm. Sotheby's. #56, L20010, 06/18/20. Formerly Marina Picasso Collection.

OPP.53:448





>**Picasso retrospectiva de 1907 a 1953, il Bienal de Sao Paulo.**
Vallauris. 1953. Poster [After *La femme qui pleure (Dora Maar)*]. 47,7 x
29,7 cm. Musée Picasso, Paris. (Inv 012/00777).

OPP.53:450

Picador. Vallauris. 1953. Terre de faïence
plate, glazed & painted. 22,5 cm.
Sotheby's. #34, L21163, 02/11-23/21.

OPP.53:451; AR:200.IV





Visage. Vallauris. 1953. Terre de faïence dish, painted & glazed. 18,8 cm. Espace Tajan. #41, 2121, 03/17/21.

OPP.53:453

Femme debout. Vallauris. 1953. Painted wood. 139 x 47 x 21 cm. Private collection.

OPP.53:455; PP.53:069e; WS:480; TE.21*:126





Visage solaire. Mougins. [1953]. Wax crayon on terracotta; round plaque. 17 cm. Sotheby's. #22, L22009, 10/13/22. Formerly Marina Picasso Collection.

OPP.53:460

La petite chouette. Vallauris. 1953. Bronze [Cast after *La petite chouette*]. 25,5 cm. Private collection.

OPP.53:464; PP.53:001e; WS:475.II





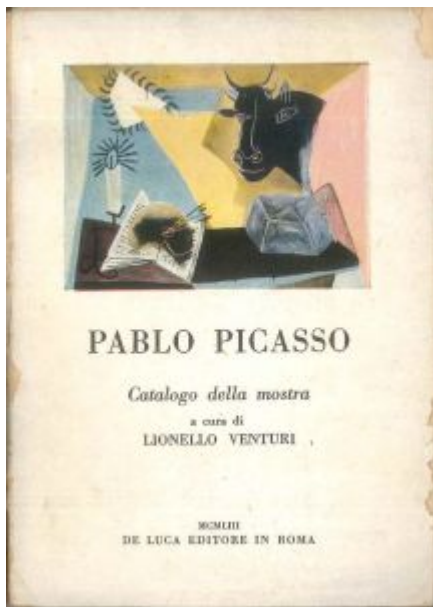
Chouette en colère. Vallauris. [1951~] 1953. Bronze [Cast after *Petite chouette*]. 25,5 x 27 x 19 cm. Museo Picasso, Málaga. On temporary loan from Fundación Almine & Bernard Ruiz-Picasso para el Arte.

OPP.53:465; PP.53:001g; WS:477.II; NC.17*:126

Condor. Vallauris. 1953. White earthenware. 41 x 40,5 x 19 cm. Private collection.

OPP.53:474; BA.23:224p





Couverture du catalogue Picasso a Roma. Rome. 1953.
Printed matter [After *Nature morte avec bougie, palette et tête de taureau noir*]. S/U. Private collection.

OPP.53:475; VR.90:184p

Colombe. Vallauris. [1953] [1954]. White terracotta modeled & painted in engobes. 13 x 9,5 x 22,5 cm. Museo Picasso, Málaga. On temporary loan from Fundación Almine & Bernard Ruiz-Picasso para el Arte.

OPP.53:477; DP.20*:159; NC.17*:130





Mains et poisson. Vallauris. 1953. Painted & glazed ceramic. 32,5 cm. Christie's. #301, 9518, 11/09/00.

OPP.53:009; BS.90b*:56

Vase à deux anses hautes. Vallauris. 1953. White earthenware pitcher, engobe decoration, knife engraved under partial brushed glaze, painted in black, white & black patina, edition 400. 39 x 37,5 cm. Christie's. #162, 2382, 11/28/00.

OPP.53:011; AR:213; GR.74:715





Mains et poisson. Vallauris. 1953. Ceramic plate painted & partially glazed terracotta, edition 250. 32 x 32 cm. Sotheby's. #713, W01402, 10/24/01.

OPP.53:014; AR:215

Paysage. Vallauris. 1953. White earthenware round dish, engobe & white enamel decoration under partial brushed glaze, painted black, blue, white, edition 200. [41,9] 42 cm. Christie's. #224, 9768, 10/31/01.

OPP.53:026; AR:207; GR.74:686





Chouette. Vallauris. 1953. Red earthenware sculpture, painted with black & white, edition 25. [35] 33 x 18,5 x 31,5 cm. Sotheby's. #456, N07717, 11/02/01.

OPP.53:031; AR:224

Mains et poisson. Vallauris. 1953. Large, shallow earthenware bowl, painted in black, red & white, edition 100. 32 cm. Musée Magnelli de la Céramique, Vallauris. Also Sotheby's. #455, N07717, 11/02/01.

OPP.53:034; AR:216; CP.95:145p;
GR.74:717





Nature morte. Vallauris. 1953. Partially glazed ceramic plate, edition 400. 32 x 39 [37,5] cm. Christie's. #217, 6683, 10/09/02.

OPP.53:040; AR:219; CE.04*:255

Poisson bleu. Vallauris. 1953. Partially glazed ceramic plate, edition 200. 32,5 x 39,5 cm. Christie's. #216, 6683, 10/09/02.

OPP.53:042; AR:180; B.III:39





Mains et poisson. Vallauris. 1953. Red earthenware plate, deep engraving painted in engobes under partial brushed glaze in russet, green, blue & ivory black, edition 250. 32 cm. Sotheby's. #196, AM0870, 11/26/02.

OPP.53:049; AR:214; B.III:43; GR.74:276

Le barbu. Vallauris. 1953. Painted & partially glazed white earthenware pitcher, edition 500. 31 x 18,5 cm. Sotheby's. #120, W03703, 03/20/03.

OPP.53:050; AR:217; HU.68*:91; IG.89*:n/a





Pichet à têtes. Vallauris. 1953. White earthenware pitcher, oxidized paraffin decoration, white enamel, painted in black & white, edition 500. [13] 12,5 x 15,5 cm. Sotheby's. #478, N07717, 11/02/01.

OPP.53:061; AR:221

Picador. Vallauris. 1953. Red earthenware cupel, engobe & enamel decoration, paraffin, glaze, painted in black, edition 500. [16,2] 16,5 x 5 cm. Sotheby's. #454, N07717, 11/02/01.

OPP.53:063; AR:211





Visage. Vallauris. 1953. White earthenware vase, decoration in engobes & oxides under partial brushed glaze, white enamel spots, painted blue, red, white, brown & black, edition 100. 23,5 x 18 x 13,5 cm. Sotheby's. #181, W04714, 10/20/04.

OPP.53:065; AR:212; BS.08b*:18

Vase aux trois masques. Vallauris. 1953. Ceramic vase. 24,5 x 28 cm. Hammer Galleries. 2006.

OPP.53:081





Visage de femme. Vallauris. 1953. Ceramic. S/U. Jane Kahan Gallery. 2005.

OPP.53:083

Tête de faune. Vallauris. 1953. White earthenware pitcher, oxidized paraffin decoration, white enamel, painted in black, edition 300. [13,4 x 12,7] 16 x 12,5 cm. Christie's. #513, 1555, 09/28/05.

OPP.53:098; AR:223





Mains et poisson. Vallauris. 1953. Red earthenware plate, incised, decoration in black engobes. 5,5 x 32 cm. Musée National de la Céramique, Sèvres. On loan from Musée Picasso, Paris. Jacqueline Roque Picasso Collection. Dation 1990.

OPP.53:107; MPP:1990.370; GR.90*:151; IC.03*:n/a; ND.01*:117

Gros oiseau visage noir. Vallauris. [1953~1954]. White earthenware vase, decoration in engobes & partial brushed glaze. 52 x 36.8 x 45.7 cm. Conzen, Beck and Eggeling. 2008.

OPP.53:168





Pigeon. Cannes. 1953~1954. Bronze. 12,5 x 26,5 x 12 cm. Musée Picasso, Paris. Dation 1979. Also Sotheby's. #116, N08588, 11/05/09.

OPP.53:210; MPP:349; WS:498.II; CE.04*:347; ME.82a*:130; MP.85:393; PA.79a*:339

Le Port de Collioure (Pour André Cazauban). Collioure. [1953~1954]. Ink. 14,6 x 13,9 cm. Masterworks Fine Art Gallery. 2006.

OPP.53:164





Tête de femme. Vallauris. 1953~1954. Oil on canvas. [61 x 46] 60,9 x 45,7 cm. The Frances Lehman Loeb Art Center. Vassar College. (Inv 1995.13.6). Gift from the collection of Mr. and Mrs. Alexander E. Racolin.

OPP.53:331; PP.53:097; Z.XV:252

Dessin géométrique. Perpignan. 1953~1954. Cut-out grey writing paper. 27 x 20 cm. Private collection.

OPP.53:437; PE.17*:32p



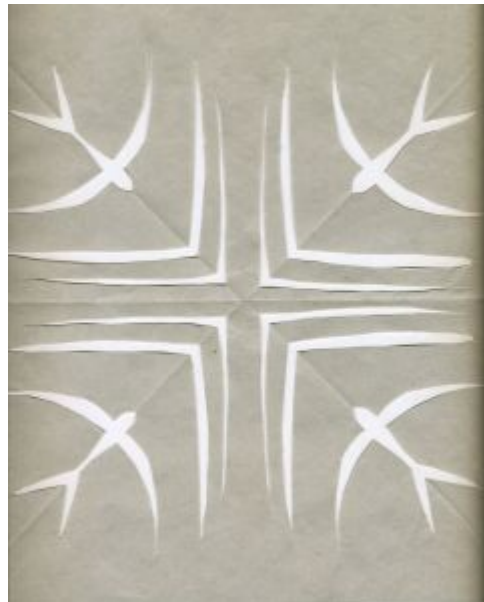


Dessin géométrique. Perpignan. 1953~1954. Cut-out grey writing paper. 27 x 20 cm. Private collection.

OPP.53:438; PE.17*:32p

Dessin géométrique aux oiseaux. Cannes. 1953~1954. Cut-out grey writing paper. 27 x 20 cm. Private collection.

OPP.53:440; PE.17*:162p





La cage à l'oiseau. Vallauris. 1953~1956. Wood & iron cage, gouache-painted paper bird & salad. 12,5 x 17 x 12,5 cm. Private collection.

OPP.53:291; WS:548.C; JR.10*:104p

Palette. Vallauris. [1953-1963]. Partially painted & glazed terracotta. 18,2 x 22,3 cm. Sotheby's. #25, L22009, 10/13/22. Formerly Marina Picasso Collection.

OPP.53:459

